

## LCMS Chiral separation of Cyproconazole by Lux 3u Cellulose-4

**Column:** Lux® 3 µm Cellulose-4, LC Column 150 x 2 mm, Ea

**Dimensions:** 150 x 2 mm ID

**Order No:** 00F-4490-B0

**Elution Type:** Isocratic

**Eluent A:** 5mM Ammonium Hydrogencarbonate

**Eluent B:** ACN

Gradient Profile:	Step No.	Time (min)	Pct A	Pct B
	1	0	40	60

**Flow Rate:** 0.2 mL/min

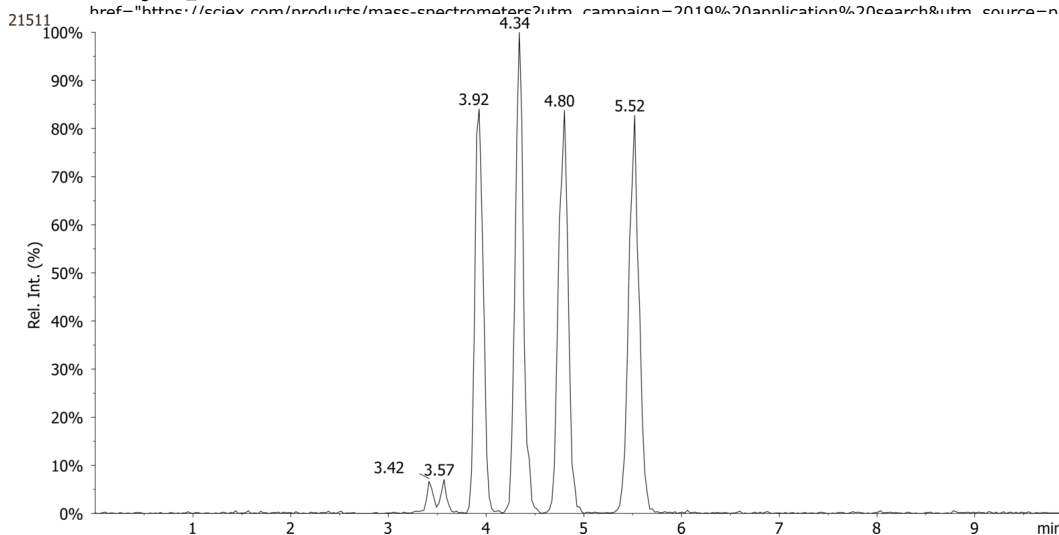
**Col. Temp.:** ambient

**Detection:** Tandem Mass Spec (MS-MS) @ (ambient)

**Detector Info:** <a target="\_blank" href="https://sciex.com/products/mass-spectrometers?utm\_campaign=2019%20application%20search&utm\_source=phenomenex&utm\_medium=referral">SCIEX</a>



Products used in this application:



### ANALYTES:

- 1 Cyproconazole  
Retention Time: 3.92 min
- 2 Cyproconazole  
Retention Time: 4.34 min
- 3 Cyproconazole  
Retention Time: 4.8 min
- 4 Cyproconazole  
Retention Time: 5.52 min

