

HPLC Application

ID No.: 21512

LCMS Chiral Separation of Epoxiconazole by Lux 3u Cellulose-2

Column: Lux[®] 3 μ m Cellulose-2, LC Column 150 x 2 mm, Ea

Dimensions: 150 x 2 mm ID

Order No: 00F-4456-B0

Elution Type: Isocratic

Eluent A: 5mM Ammonium Hydrogencarbonate

Eluent B: MeOH

Gradient Profile:	Step No.	Time (min)	Pct A	Pct B
	1	0	10	90

Flow Rate: 0.2 mL/min

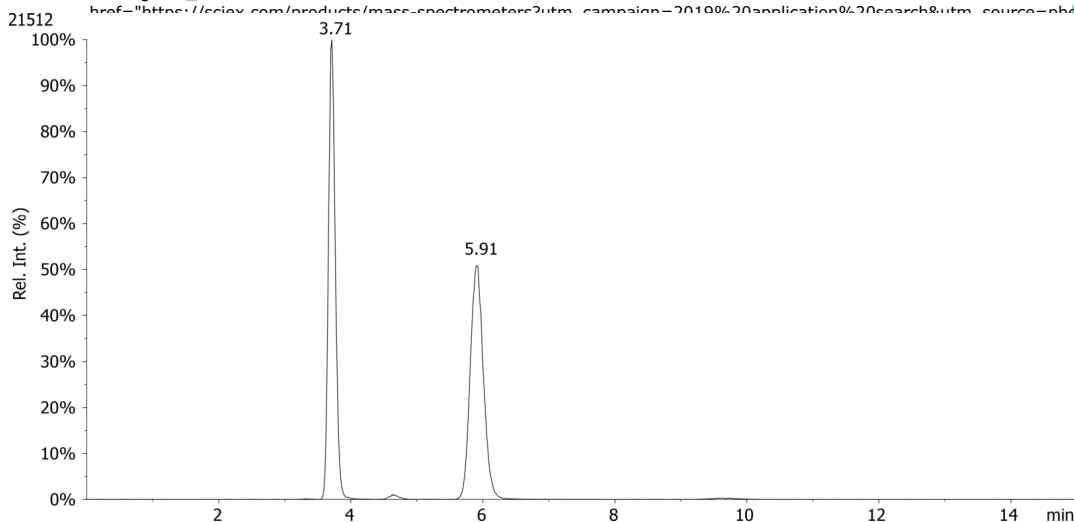
Col. Temp.: ambient

Detection: Tandem Mass Spec (MS-MS) @ (ambient)

Detector Info: SCIEX<



Products used in this application:



ANALYTES:

1 Epoxiconazole

Retention Time: 3.71 min

2 Epoxiconazole

Retention Time: 5.91 min

