

LCMS Chiral Separation of Triticonazole by Lux 3u Cellulose-1

Column: Lux® 3 µm Cellulose-1, LC Column 150 x 2 mm, Ea

Dimensions: 150 x 2 mm ID

Order No: 00F-4458-B0

Elution Type: Isocratic

Eluent A: 5mM Ammonium Hydrogencarbonate

Eluent B: ACN

Gradient Profile:	Step No.	Time (min)	Pct A	Pct B
	1	0	40	60

Flow Rate: 0.2 mL/min

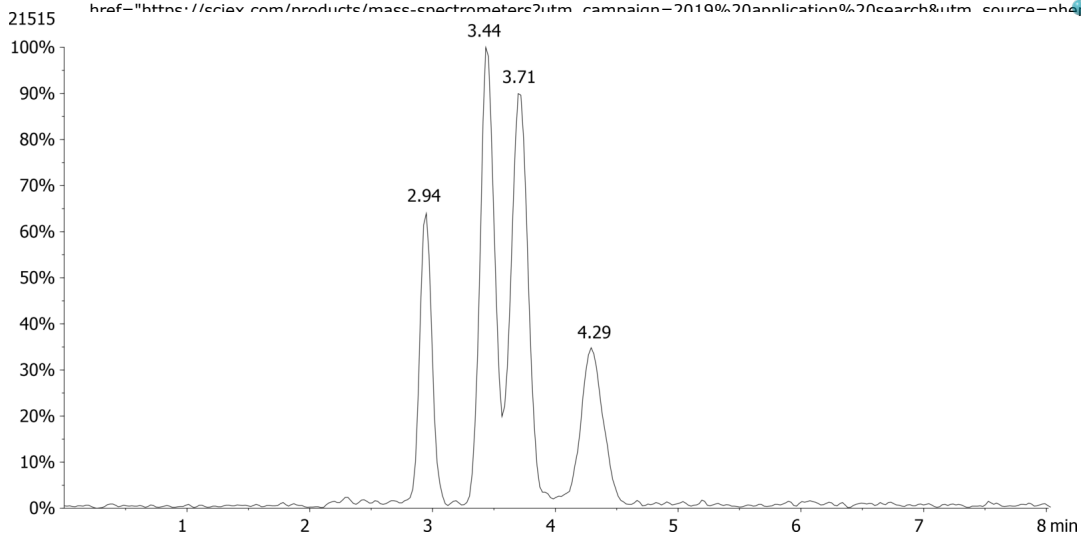
Col. Temp.: ambient

Detection: Tandem Mass Spec (MS-MS) @ (ambient)

Detector Info:

<a target="_blank"

href="https://sciex.com/products/mass-spectrometers?utm_campaign=2019%20application%20search&utm_source=phenomenex&utm_medium=referral">SCIEX<



Products used in this application:



ANALYTES:

- 1 Triticonazole
Retention Time: 2.7 min
- 2 Triticonazole
Retention Time: 3.8 min
- 3 Triticonazole
Retention Time: 4.13 min
- 4 Triticonazole
Retention Time: 5.46 min

