

Underivatized Formaldehyde Analysis on ZB-1

Column: Zebron[™] ZB-1, GC Cap. Column 30 m x 0.32 mm x 3.00 μm, Ea

Phase: 100% Dimethylpolysiloxane

Dimensions: 30 meters x 0.32 mm x 3 μm

Order No: 7HM-G001-36

Oven Profile: 50 °C Isothermal

Carrier Gas: Constant Flow Helium, 2.5 mL/min

Injection: Split 5:1 1 μL @ 140°C

Detection: Flame Ionization (FID) (250°C)

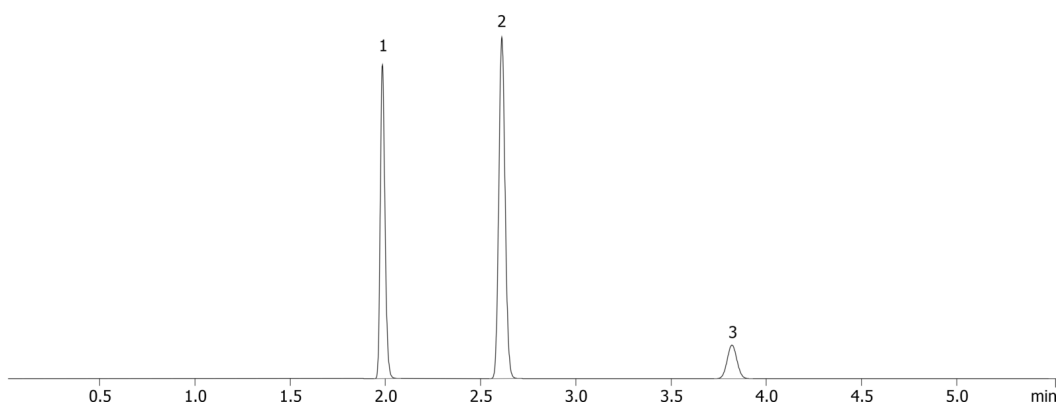
Analyst Note: Sample injected using a Tekmar Versa Headspace Autosampler.
Headspace oven @ 60 °C for 10 minutes; transfer line = 65 °C; Vial pressurization = 15psi.
GC analysis on Shimadzu GC-2010 plus
Analytes were 0.5% in water. Nine different samples were prepared and analyzed with 2.0% RSD in peak area for formaldehyde.



Products used in this application:



21516



ANALYTES:

- 1 Formaldehyde
- 2 Methanol
- 3 Ethanol

