

HPLC Application

ID No.: 21517

Rezex RCM EP Method: Isomalt, Malitol, Mannitol, and Sorbitol

Column: Rezex[™] RCM-Monosaccharide Ca+2 (8%), LC Column 300 x 7.8 mm, Ea

Dimensions: 300 x 7.8 mm ID

Order No: 00H-0130-K0

Elution Type: Isocratic

Eluent A: H₂O

Eluent B: N/A

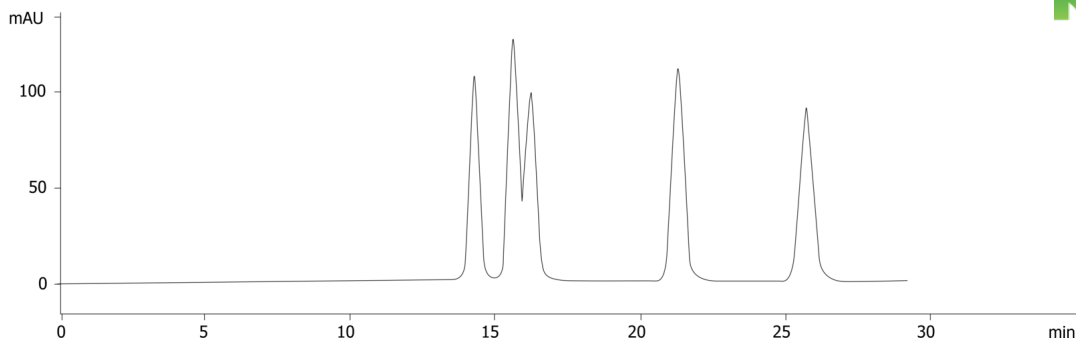
Gradient Profile:	Step No.	Time (min)	Pct A	Pct B
	1	0	100	0

Flow Rate: 0.5 mL/min

Col. Temp.: 85 °C

Detection: Refractive Index (RI) @ N / A nm (40 °C)

21517



REZEX[™]
HPLC COLUMNS for Carbohydrates, Oligosaccharides, and Organic Acid Analysis



Products used in this application:

REZEX[™]

ANALYTES:

- 1** Isomalt
Retention Time: 14.3 min
- 2** Maltitol
Retention Time: 15.6 min
- 3** Isomaltitol
Retention Time: 16.2 min
- 4** D-Mannitol
Retention Time: 21.3 min
- 5** D-Sorbitol
Retention Time: 25.7 min

