

Reduced Human Ig-G1 on Aeris: LC/MS Fast Separation

Column: Aeris™ 3.6 µm WIDEPORE XB-C8 200 Å, LC Column 100 x 2.1 mm, Ea

Dimensions: 100 x 2.1 mm ID

Order No: 00D-4481-AN

Elution Type: Gradient

Eluent A: 0.2% Formic Acid in Water

Eluent B: IPA/AcCN/0.2% formic acid in water 80:10:10

Gradient Profile:	Step No.	Time (min)	Pct A	Pct B
	1	0	95	5
	2	10	5	95
	3	14	5	95
	4	14.01	95	5

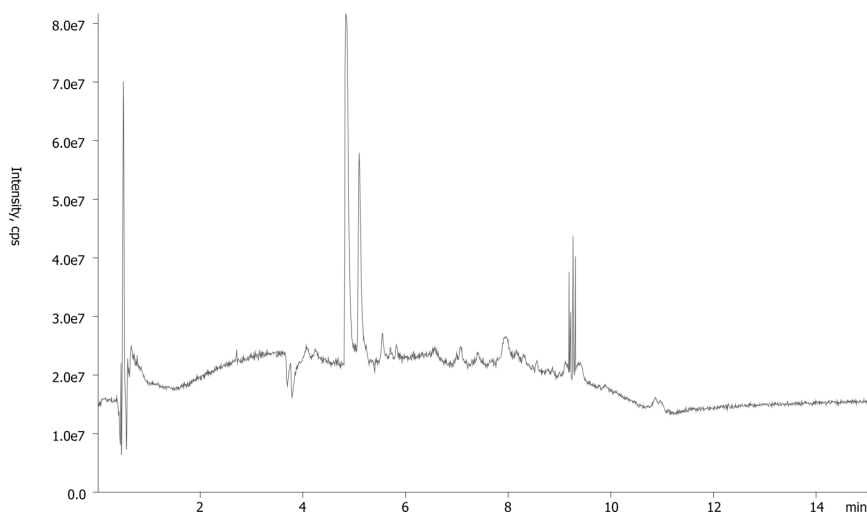
Flow Rate: 0.4 mL/min

Col. Temp.: 70 °C

Detection: Mass Spectrometer (MS) @ amu (ambient)

Detector Info: <a target="_blank"

href="https://sciex.com/products/mass-spectrometers?utm_campaign=2019%20application%20search&utm_source=phenomenex&utm_medium=referral">SCIEX<



ANALYTES:

- 1 Reduced Heavy Chain IgG1

Retention Time: 4.84 min

- 2 Reduced Light Chain

Retention Time: 5.1 min



Products used in this application:

