

FMOC-Met-OH on Lux 5µm Cellulose-4 in NP

Column: Lux® 5 µm Cellulose-4, LC Column 250 x 4.6 mm, Ea

Dimensions: 250 x 4.6 mm ID

Order No: 00G-4491-E0

Elution Type: Isocratic

Eluent A: Hexane / IPA (60:40) Formic acid (0.1%)

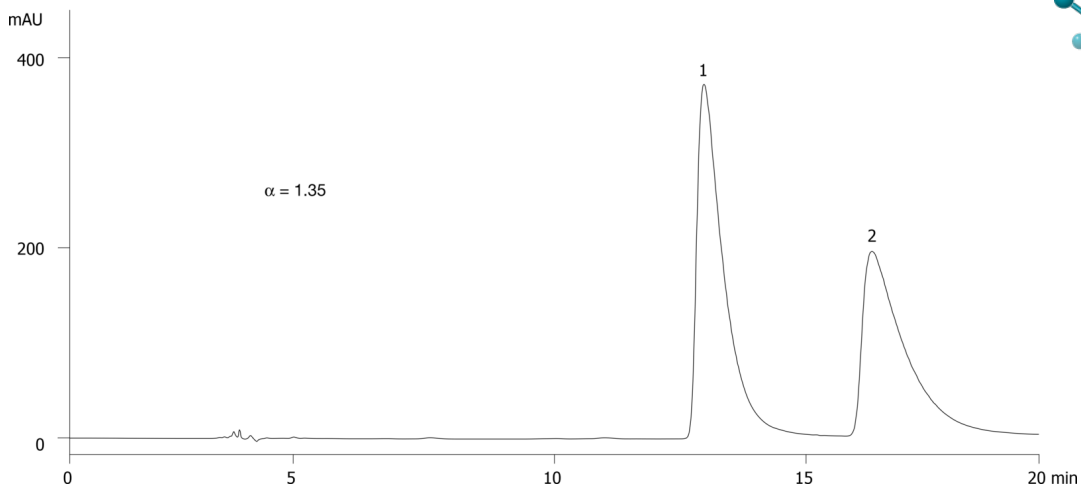
Gradient	Step No.	Time (min)	Pct A
Profile:	1	0	100

Flow Rate: 1 mL/min

Col. Temp.: ambient

Detection: UV-Vis Abs.-Variable Wave.(UV) @ 254 nm (ambient)

21533



Products used in this application:



ANALYTES:

- 1** FMOC-Met-OH
Retention Time: 13.056 min
- 2** FMOC-Met-OH
Retention Time: 16.512 min

