

# HPLC Application

ID No.: 21536

## FMOC-Met-OH on Lux 5 $\mu$ m Cellulose-3 in NP

**Column:** Lux<sup>®</sup> 5  $\mu$ m Cellulose-3, LC Column 250 x 4.6 mm, Ea

**Dimensions:** 250 x 4.6 mm ID

**Order No:** 00G-4493-E0

**Elution Type:** Isocratic

**Eluent A:** Hexane / EtOH (80:20) Formic acid (0.1%)

Gradient	Step No.	Time (min)	Pct A
<b>Profile:</b>	<b>1</b>	0	100

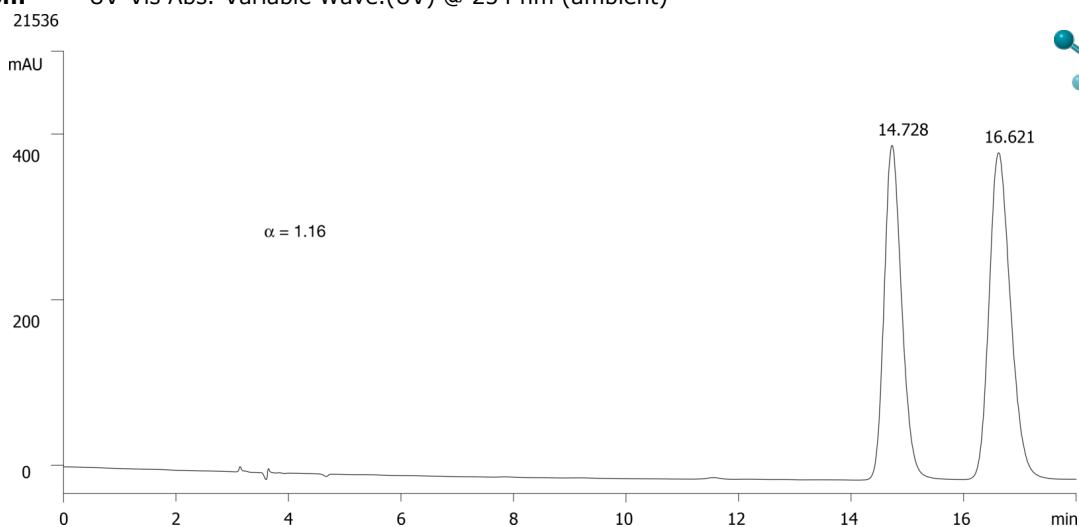
**Flow Rate:** 1 mL/min

**Col. Temp.:** ambient

**Detection:** UV-Vis Abs.-Variable Wave.(UV) @ 254 nm (ambient)



Products used in this application:



### ANALYTES:

- 1** FMOC-Met-OH  
Retention Time: 14.728 min
- 2** FMOC-Met-OH  
Retention Time: 16.621 min