

## FMOC-Glu(OtBu)-OH on Lux 5µm Cellulose-4 in NP

**Column:** Lux® 5 µm Cellulose-4, LC Column 250 x 4.6 mm, Ea

**Dimensions:** 250 x 4.6 mm ID

**Order No:** 00G-4491-E0

**Elution Type:** Isocratic

**Eluent A:** Hexane / EtOH (60:40) Formic acid (0.1%)

Gradient	Step No.	Time (min)	Pct A
Profile:	1	0	100

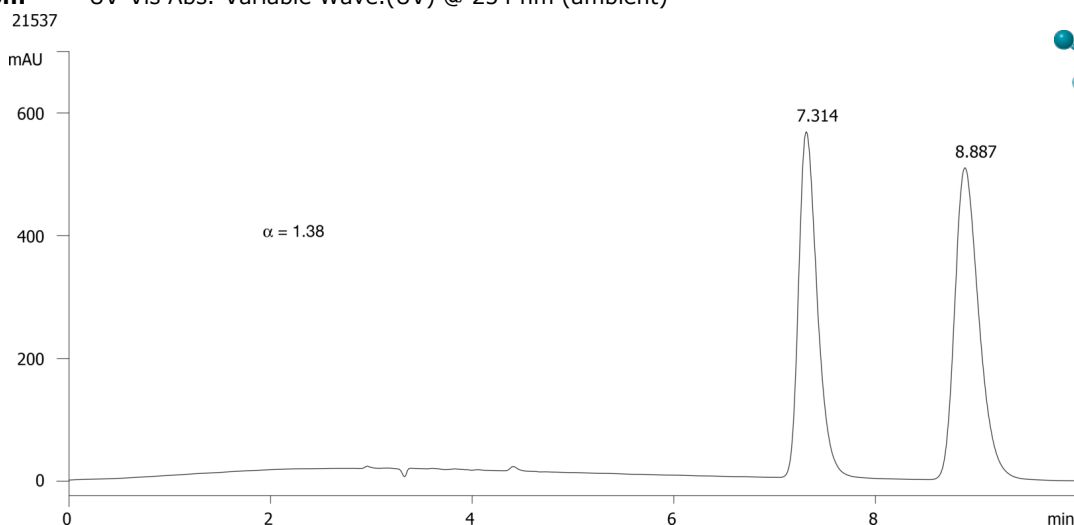
**Flow Rate:** 1 mL/min

**Col. Temp.:** ambient

**Detection:** UV-Vis Abs.-Variable Wave.(UV) @ 254 nm (ambient)



Products used in this application:



### ANALYTES:

1 FMOC-Glu(OtBu)-OH

Retention Time: 7.314 min

2 FMOC-Glu(OtBu)-OH

Retention Time: 8.887 min

