

HPLC Application

ID No.: 21558

FMOC-Met-OH on Lux 5 μ m Cellulose-1 in RP

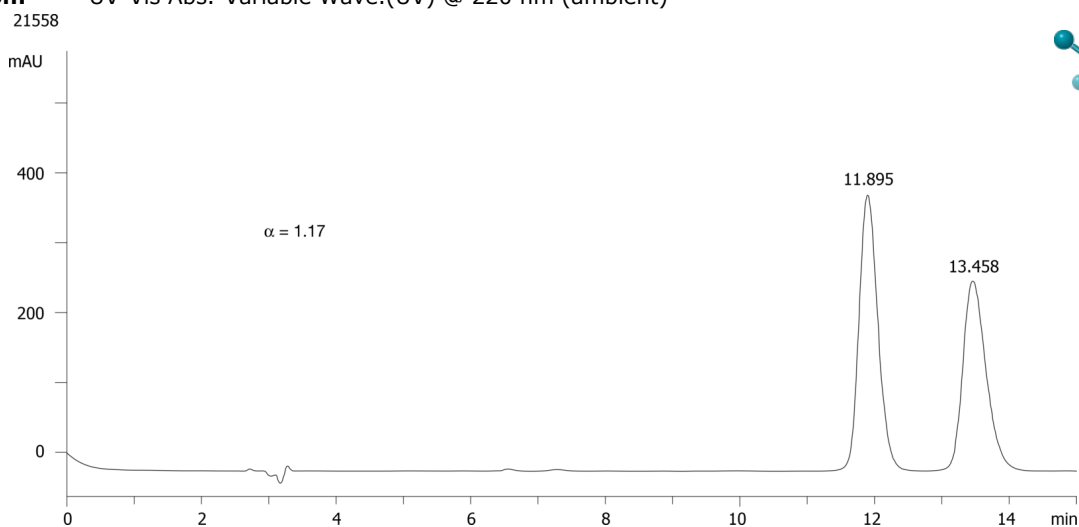
Column: Lux[®] 5 μ m Cellulose-1, LC Column 250 x 4.6 mm, Ea
Dimensions: 250 x 4.6 mm ID
Order No: 00G-4459-E0
Elution Type: Isocratic
Eluent A: ACN / 0.1% Formic Acid (60:40) with Formic acid (0.1%) in buffer
Gradient

Step No.	Time (min)	Pct A
1	0	100

Profile:
Flow Rate: 1 mL/min
Col. Temp.: ambient
Detection: UV-Vis Abs.-Variable Wave.(UV) @ 220 nm (ambient)



Products used in this application:



ANALYTES:

- 1 FMOC-Met-OH
Retention Time: 11.895 min
- 2 FMOC-Met-OH
Retention Time: 13.458 min