

# HPLC Application

ID No.: 21559

## FMOC-Met-OH on Lux 5µm Cellulose-1 in RP

**Column:** Lux<sup>®</sup> 5 µm Cellulose-1, LC Column 250 x 4.6 mm, Ea

**Dimensions:** 250 x 4.6 mm ID

**Order No:** 00G-4459-E0

**Elution Type:** Isocratic

**Eluent A:** ACN / 0.1% TFA (60:40) with TFA (0.1%) in buffer

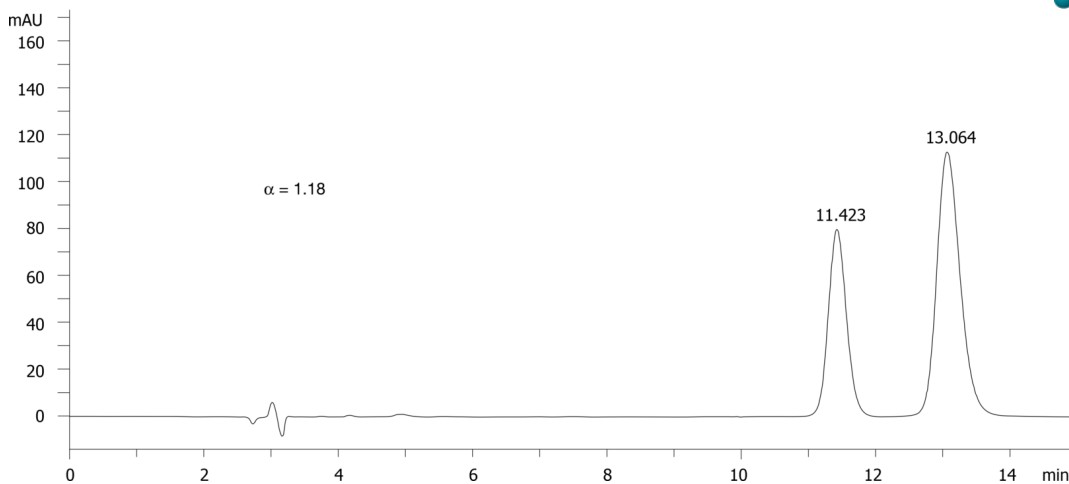
Gradient	Step No.	Time (min)	Pct A
<b>Profile:</b>	<b>1</b>	0	100

**Flow Rate:** 1 mL/min

**Col. Temp.:** ambient

**Detection:** UV-Vis Abs.-Variable Wave.(UV) @ 220 nm (ambient)

21559



Products used in this application:



### ANALYTES:

- 1** FMOC-Met-OH  
Retention Time: 11.423 min
- 2** FMOC-Met-OH  
Retention Time: 13.064 min