

FMOC-Glu(OtBu)-OH on Lux 5µm Cellulose-1 in RP

Column: Lux® 5 µm Cellulose-1, LC Column 250 x 4.6 mm, Ea

Dimensions: 250 x 4.6 mm ID

Order No: 00G-4459-E0

Elution Type: Isocratic

Eluent A: MeOH / 0.1% TFA (90:10) with TFA (0.1%) in buffer

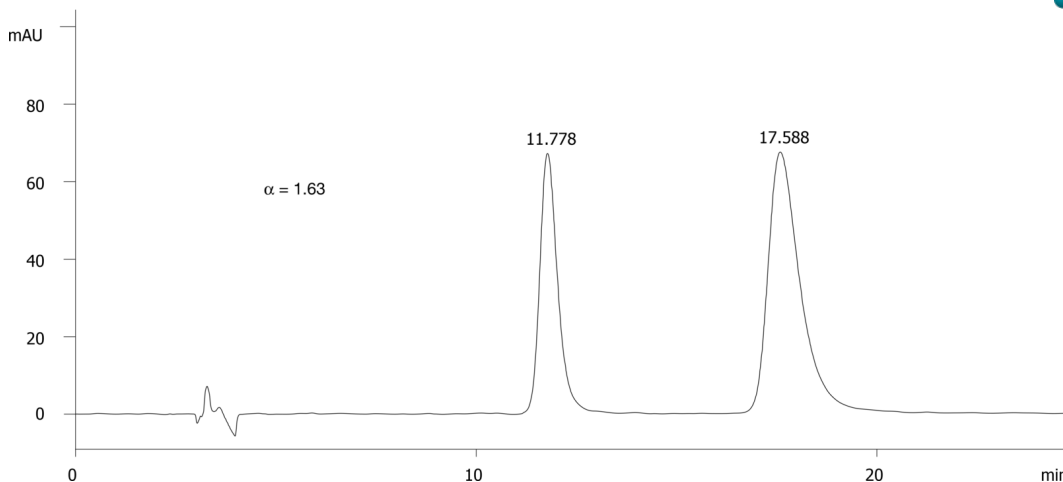
Gradient	Step No.	Time (min)	Pct A
Profile:	1	0	100

Flow Rate: 1 mL/min

Col. Temp.: ambient

Detection: UV-Vis Abs.-Variable Wave.(UV) @ 220 nm (ambient)

21577



Products used in this application:



ANALYTES:

- 1** FMOC-Glu(OtBu)-OH
Retention Time: 11.778 min
- 2** FMOC-Glu(OtBu)-OH
Retention Time: 17.588 min

