

FMOC-Phe-OH on Lux 5µm Cellulose-1 in RP

Column: Lux® 5 µm Cellulose-1, LC Column 250 x 4.6 mm, Ea

Dimensions: 250 x 4.6 mm ID

Order No: 00G-4459-E0

Elution Type: Isocratic

Eluent A: ACN / 0.1% Formic Acid (60:40) Formic acid (0.1%)

Gradient	Step No.	Time (min)	Pct A
Profile:	1	0	100

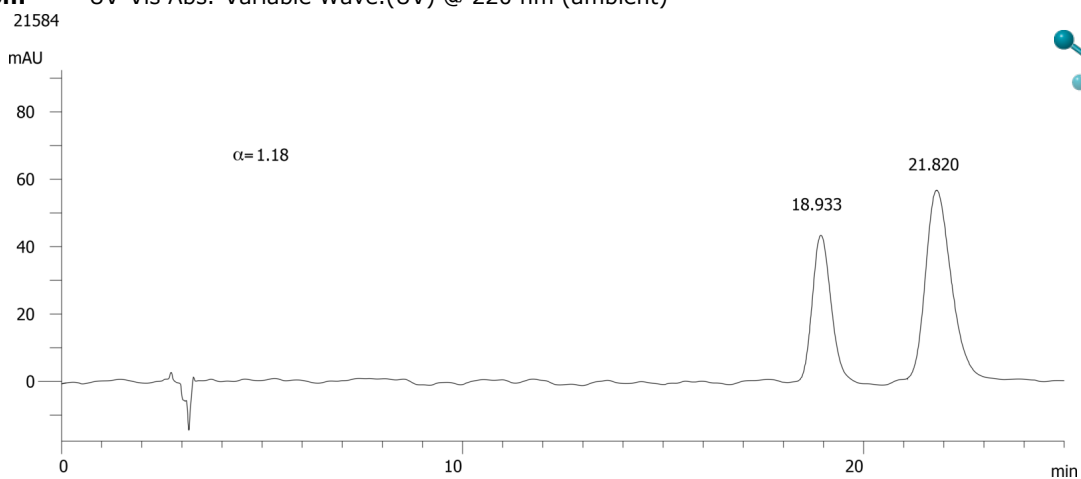
Flow Rate: 1 mL/min

Col. Temp.: ambient

Detection: UV-Vis Abs.-Variable Wave.(UV) @ 220 nm (ambient)



Products used in this application:



ANALYTES:

- 1** FMOC-Phe-OH
Retention Time: 18.933 min
- 2** FMOC-Phe-OH
Retention Time: 21.82 min

