

# HPLC Application

ID No.: 21597

## FMOC-Phe-OH on Lux 5 $\mu$ m Cellulose-2 in RP

**Column:** Lux<sup>®</sup> 5  $\mu$ m Cellulose-2, LC Column 250 x 4.6 mm, Ea

**Dimensions:** 250 x 4.6 mm ID

**Order No:** 00G-4457-E0

**Elution Type:** Isocratic

**Eluent A:** MeOH / 0.1% TFA (90:10) TFA (0.1%)

Gradient	Step No.	Time (min)	Pct A
<b>Profile:</b>	<b>1</b>	0	100

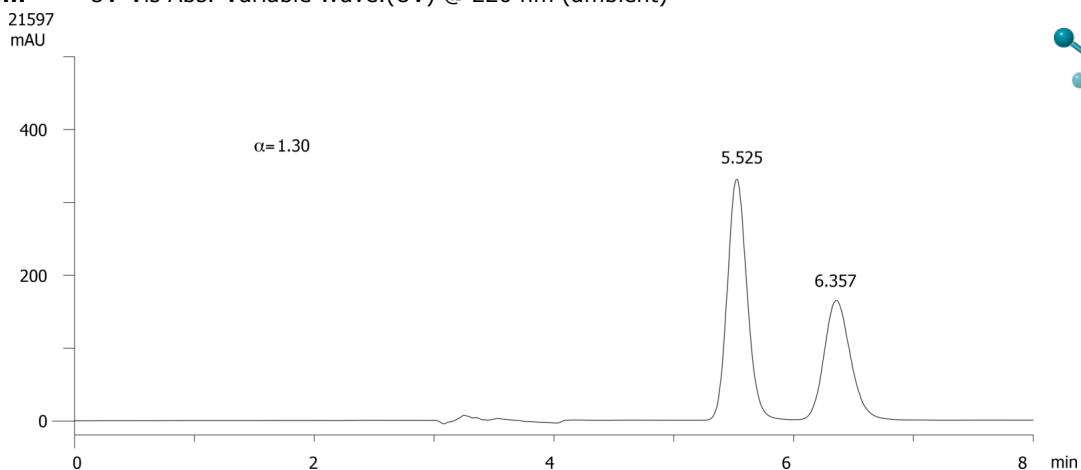
**Flow Rate:** 1 mL/min

**Col. Temp.:** ambient

**Detection:** UV-Vis Abs.-Variable Wave.(UV) @ 220 nm (ambient)



Products used in this application:



### ANALYTES:

- 1** FMOC-Phe-OH  
Retention Time: 5.525 min
- 2** FMOC-Phe-OH  
Retention Time: 6.357 min