

# HPLC Application

ID No.: 21600

## FMOC-Met-OH on Lux 5 $\mu$ m Cellulose-2 in RP

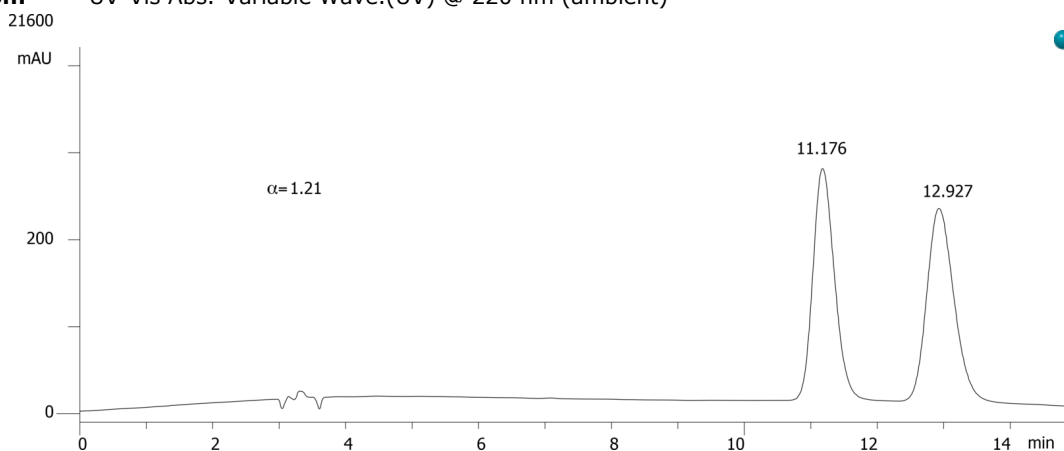
**Column:** Lux<sup>®</sup> 5  $\mu$ m Cellulose-2, LC Column 250 x 4.6 mm, Ea  
**Dimensions:** 250 x 4.6 mm ID  
**Order No:** 00G-4457-E0  
**Elution Type:** Isocratic  
**Eluent A:** MeOH / 0.1% Formic Acid (80:20) with Formic acid (0.1%) in buffer  
**Gradient**

Step No.	Time (min)	Pct A
1	0	100

**Profile:**  
**Flow Rate:** 1 mL/min  
**Col. Temp.:** ambient  
**Detection:** UV-Vis Abs.-Variable Wave.(UV) @ 220 nm (ambient)



Products used in this application:



### ANALYTES:

- 1 FMOC-Met-OH  
Retention Time: 11.176 min
- 2 FMOC-Met-OH  
Retention Time: 12.927 min

