

HPLC Application

ID No.: 21601

FMOC-Glu(OtBu)-OH on Lux 5 μ m Cellulose-2 in RP

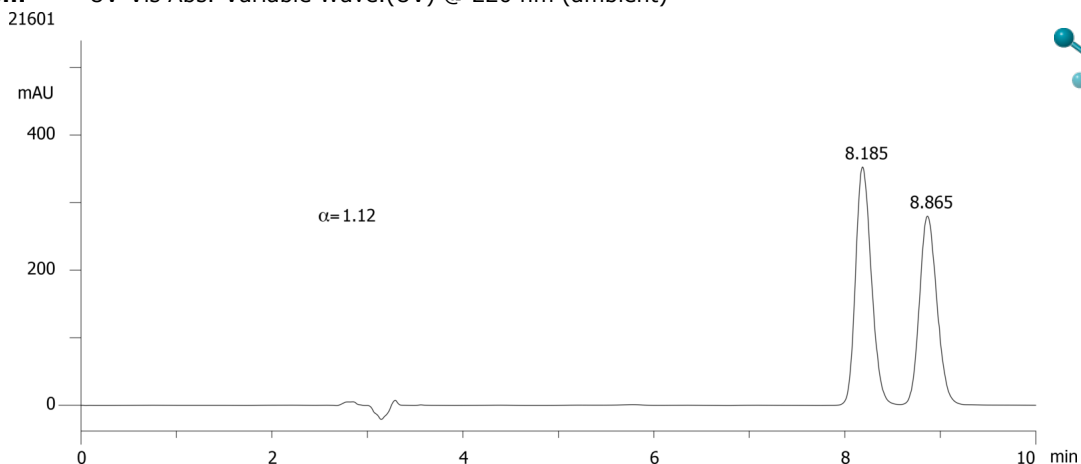
Column: Lux[®] 5 μ m Cellulose-2, LC Column 250 x 4.6 mm, Ea
Dimensions: 250 x 4.6 mm ID
Order No: 00G-4457-E0
Elution Type: Isocratic
Eluent A: ACN / 0.1% Formic Acid (60:40) with Formic acid (0.1%) in buffer
Gradient

Step No.	Time (min)	Pct A
1	0	100

Profile:
Flow Rate: 1 mL/min
Col. Temp.: ambient
Detection: UV-Vis Abs.-Variable Wave.(UV) @ 220 nm (ambient)



Products used in this application:



ANALYTES:

- 1 FMOC-Glu(OtBu)-OH
Retention Time: 8.185 min
- 2 FMOC-Glu(OtBu)-OH
Retention Time: 8.865 min

