

FMOC-Thr(tBu)-OH on Lux 5µm Cellulose-2 in RP

Column: Lux® 5 µm Cellulose-2, LC Column 250 x 4.6 mm, Ea

Dimensions: 250 x 4.6 mm ID

Order No: 00G-4457-E0

Elution Type: Isocratic

Eluent A: MeOH / 0.1% TFA (90:10) with TFA (0.1%) in buffer

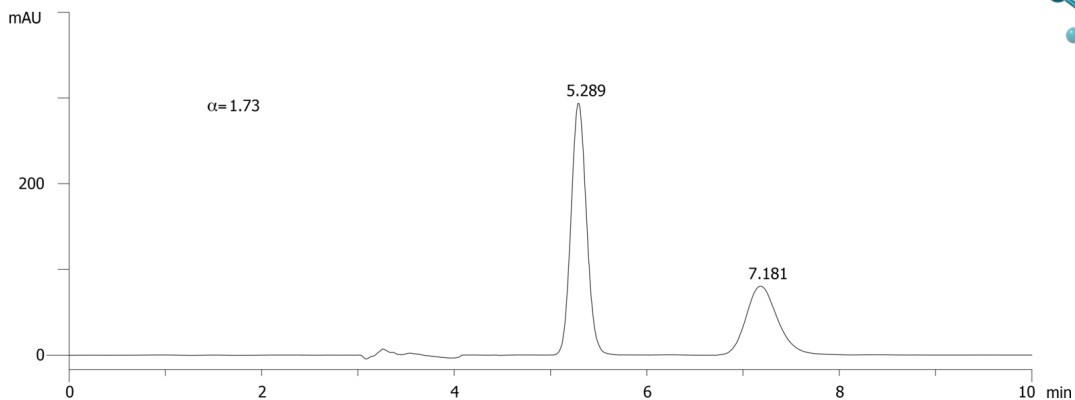
Gradient	Step No.	Time (min)	Pct A
Profile:	1	0	100

Flow Rate: 1 mL/min

Col. Temp.: ambient

Detection: UV-Vis Abs.-Variable Wave.(UV) @ 220 nm (ambient)

21606



Products used in this application:



ANALYTES:

- 1** FMOC-Thr(tBu)-OH
Retention Time: 5.289 min
- 2** FMOC-Thr(tBu)-OH
Retention Time: 7.181 min

