

HPLC Application

ID No.: 21611

FMOC-Val-OH on Lux 5 μ m Cellulose-2 in RP

Column: Lux[®] 5 μ m Cellulose-2, LC Column 250 x 4.6 mm, Ea

Dimensions: 250 x 4.6 mm ID

Order No: 00G-4457-E0

Elution Type: Isocratic

Eluent A: MeOH / 0.1% TFA (80:20) with TFA (0.1%) in buffer

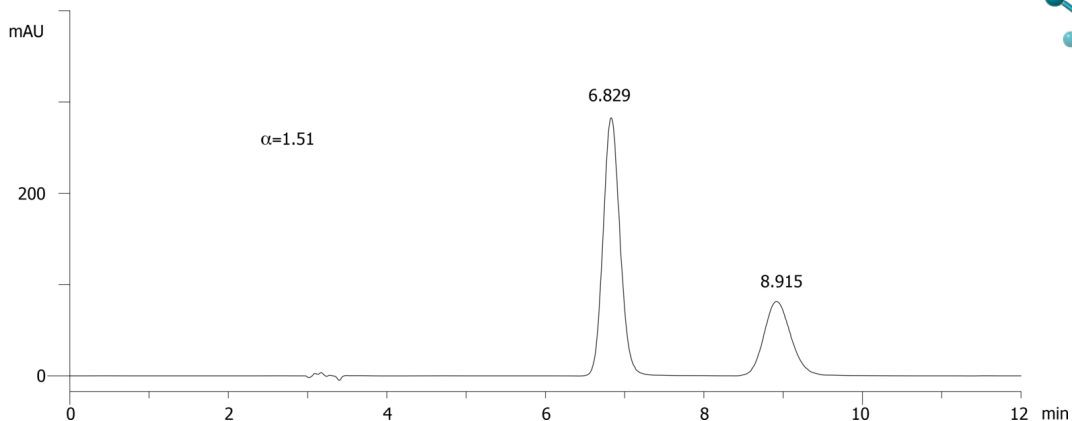
| Gradient | Step No. | Time (min) | Pct A |
|-----------------|----------|------------|-------|
| Profile: | 1 | 0 | 100 |

Flow Rate: 1 mL/min

Col. Temp.: ambient

Detection: UV-Vis Abs.-Variable Wave.(UV) @ 220 nm (ambient)

21611



Products used in this application:



ANALYTES:

- 1** FMOC-Val-OH
Retention Time: 6.829 min
- 2** FMOC-Val-OH
Retention Time: 8.915 min

