

# HPLC Application

ID No.: 21639

## FMOC-Met-OH on Lux 5 $\mu$ m Cellulose-4 in RP

**Column:** Lux<sup>®</sup> 5  $\mu$ m Cellulose-4, LC Column 250 x 4.6 mm, Ea

**Dimensions:** 250 x 4.6 mm ID

**Order No:** 00G-4491-E0

**Elution Type:** Isocratic

**Eluent A:** ACN / 0.1% TFA (50:50) with TFA (0.1%) in buffer

Gradient	Step No.	Time (min)	Pct A
<b>Profile:</b>	<b>1</b>	0	100

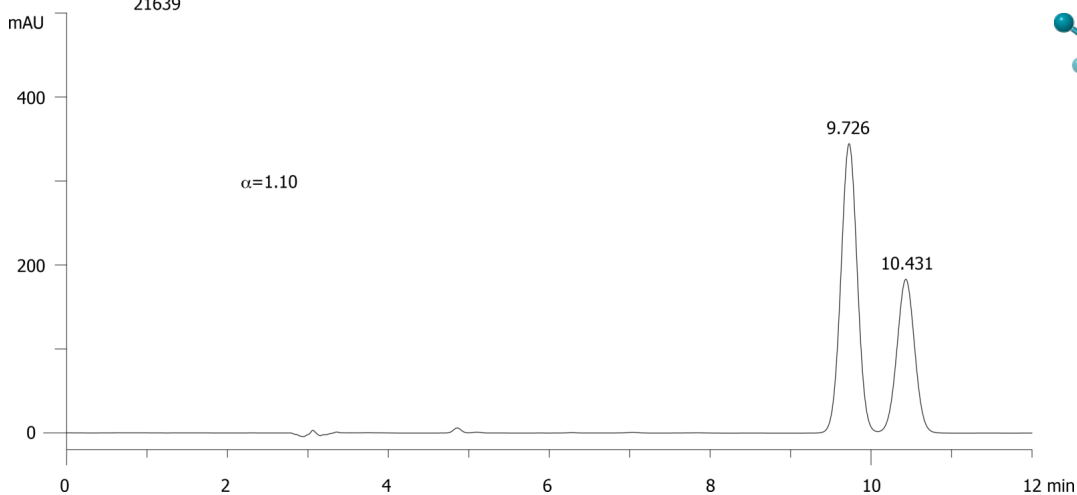
**Flow Rate:** 1 mL/min

**Col. Temp.:** ambient

**Detection:** UV-Vis Abs.-Variable Wave.(UV) @ 220 nm (ambient)  
21639



Products used in this application:



### ANALYTES:

- 1** FMOC-Met-OH  
Retention Time: 9.726 min
- 2** FMOC-Met-OH  
Retention Time: 10.431 min

