

## FMOC-Ile-OH on Lux 5µm Cellulose-3 in RP

**Column:** Lux® 5 µm Cellulose-3, LC Column 250 x 4.6 mm, Ea

**Dimensions:** 250 x 4.6 mm ID

**Order No:** 00G-4493-E0

**Elution Type:** Isocratic

**Eluent A:** MeOH / 0.1% TFA (90:10) with TFA (0.1%) in buffer

Gradient	Step No.	Time (min)	Pct A
<b>Profile:</b>	<b>1</b>	0	100

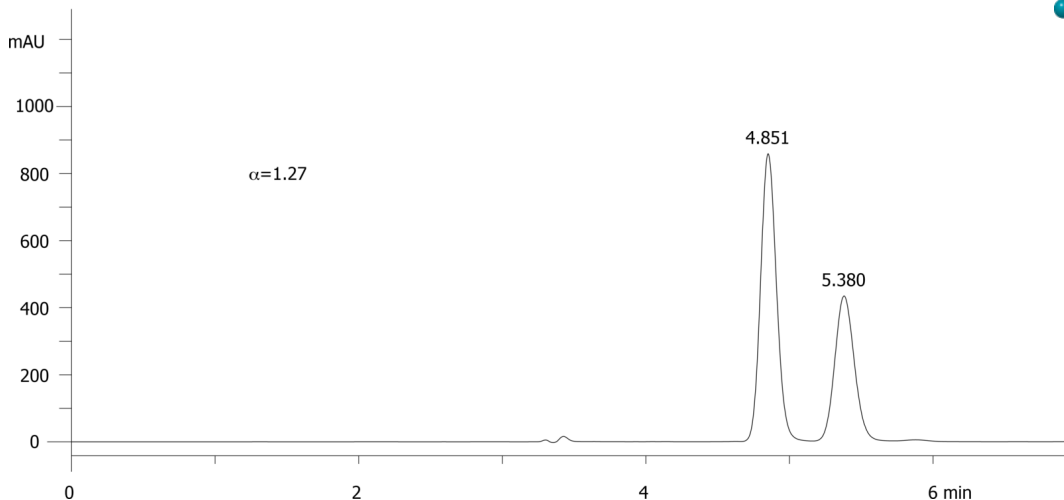
**Flow Rate:** 1 mL/min

**Col. Temp.:** ambient

**Detection:** UV-Vis Abs.-Variable Wave.(UV) @ 220 nm (ambient)  
21649



Products used in this application:



### ANALYTES:

- 1** FMOC-Ile-OH  
Retention Time: 4.851 min
- 2** FMOC-Ile-OH  
Retention Time: 5.38 min

