

# HPLC Application

ID No.: 21672

## Cyproconazole on Lux 5 $\mu$ m Cellulose-4 in NP

**Column:** Lux<sup>®</sup> 5  $\mu$ m Cellulose-4, LC Column 250 x 4.6 mm, Ea

**Dimensions:** 250 x 4.6 mm ID

**Order No:** 00G-4491-E0

**Elution Type:** Isocratic

**Eluent A:** Hexane / IPA (80:20) DEA (0.1%)

| Gradient        | Step No. | Time (min) | Pct A |
|-----------------|----------|------------|-------|
| <b>Profile:</b> | <b>1</b> | 0          | 100   |

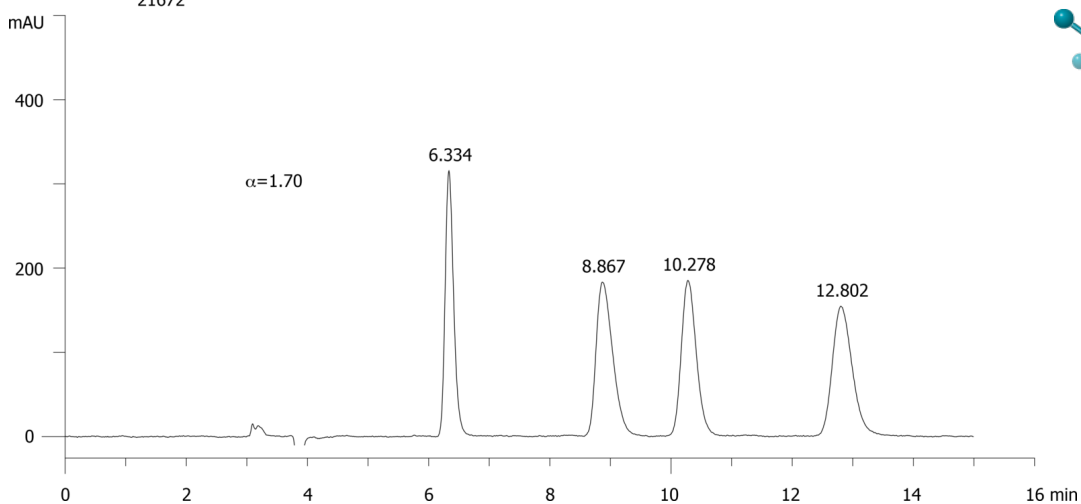
**Flow Rate:** 1 mL/min

**Col. Temp.:** ambient

**Detection:** UV-Vis Abs.-Variable Wave.(UV) @ 220 nm (ambient)  
21672



Products used in this application:



### ANALYTES:

- 1** Cyproconazole  
Retention Time: 6.334 min
- 2** Cyproconazole  
Retention Time: 8.867 min
- 3** Cyproconazole  
Retention Time: 10.278 min
- 4** Cyproconazole  
Retention Time: 12.802 min

