

## Imazamthabenz methyl on Lux 5µm Cellulose-3 in NP

**Column:** Lux® 5 µm Cellulose-3, LC Column 250 x 4.6 mm, Ea

**Dimensions:** 250 x 4.6 mm ID

**Order No:** 00G-4493-E0

**Elution Type:** Isocratic

**Eluent A:** Hexane / EtOH (95:5) DEA (0.1%)

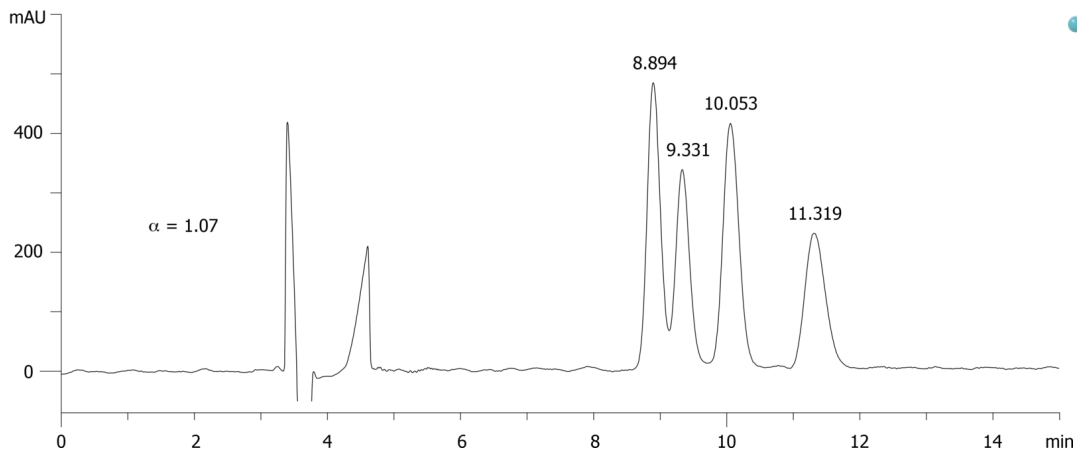
Gradient	Step No.	Time (min)	Pct A
<b>Profile:</b>	<b>1</b>	0	100

**Flow Rate:** 1 mL/min

**Col. Temp.:** ambient

**Detection:** UV-Vis Abs.-Variable Wave.(UV) @ 220 nm (ambient)

21712



Products used in this application:



### ANALYTES:

**1** Imazamthabenz-methyl

Retention Time: 8.894 min

**2** Imazamthabenz-methyl

Retention Time: 9.331 min

**3** Imazamthabenz-methyl

Retention Time: 10.053 min

**4** Imazamthabenz-methyl

Retention Time: 11.318 min

