

# HPLC Application

ID No.: 21728

## Simeconazole on Lux 5µm Cellulose-1 in NP

**Column:** Lux<sup>®</sup> 5 µm Cellulose-1, LC Column 250 x 4.6 mm, Ea

**Dimensions:** 250 x 4.6 mm ID

**Order No:** 00G-4459-E0

**Elution Type:** Isocratic

**Eluent A:** Hexane / IPA (80:20) DEA (0.1%)

Gradient	Step No.	Time (min)	Pct A
<b>Profile:</b>	<b>1</b>	0	100

**Flow Rate:** 1 mL/min

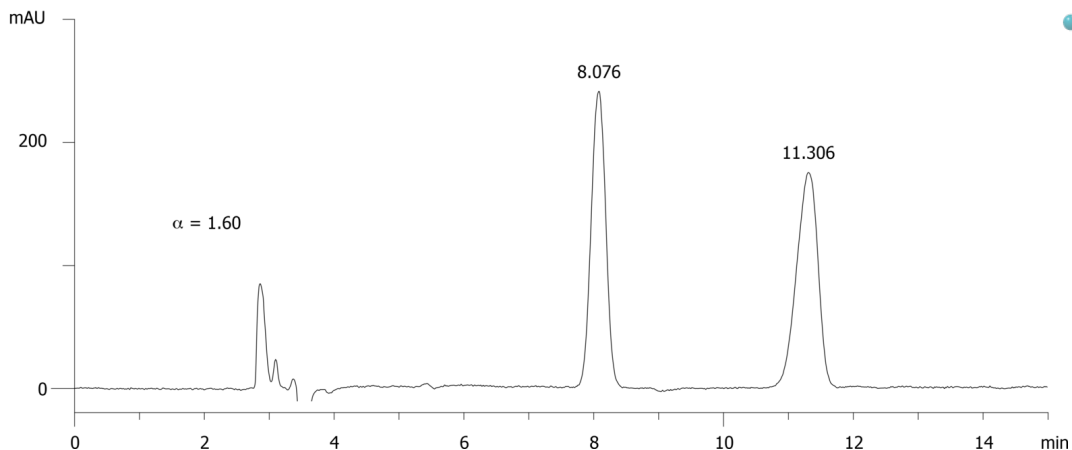
**Col. Temp.:** ambient

**Detection:** UV-Vis Abs.-Variable Wave.(UV) @ 220 nm (ambient)

21728



Products used in this application:



### ANALYTES:

**1** Simeconazole

Retention Time: 8.076 min

**2** Simeconazole

Retention Time: 11.306 min

