

## Fenoxaprop ethyl on Lux 5µm Cellulose-4 in RP

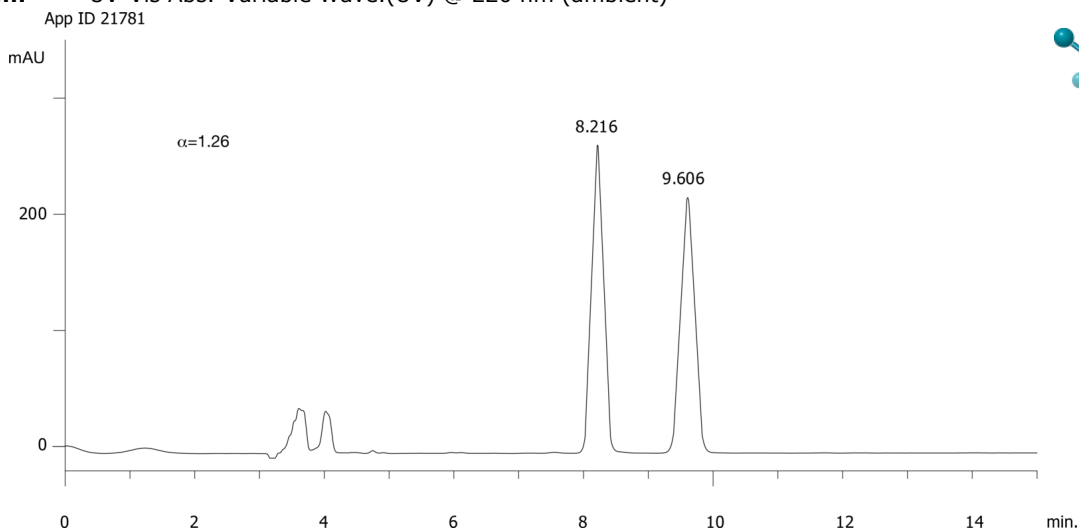
**Column:** Lux® 5 µm Cellulose-4, LC Column 250 x 4.6 mm, Ea  
**Dimensions:** 250 x 4.6 mm ID  
**Order No:** 00G-4491-E0  
**Elution Type:** Isocratic  
**Eluent A:** MeOH / 20mM NH<sub>4</sub>HCO<sub>3</sub>+0.1%DEA (90:10) with DEA (0.1%) in buffer  
**Gradient**

Step No.	Time (min)	Pct A
1	0	100

**Profile:**  
**Flow Rate:** 1 mL/min  
**Col. Temp.:** ambient  
**Detection:** UV-Vis Abs.-Variable Wave.(UV) @ 220 nm (ambient)



Products used in this application:



### ANALYTES:

- 1 Fenoxaprop ethyl  
Retention Time: 8.216 min
- 2 Fenoxaprop ethyl  
Retention Time: 9.606 min

