

HPLC Application

ID No.: 21832

Simeconazole on Lux 5µm Cellulose-4 in RP

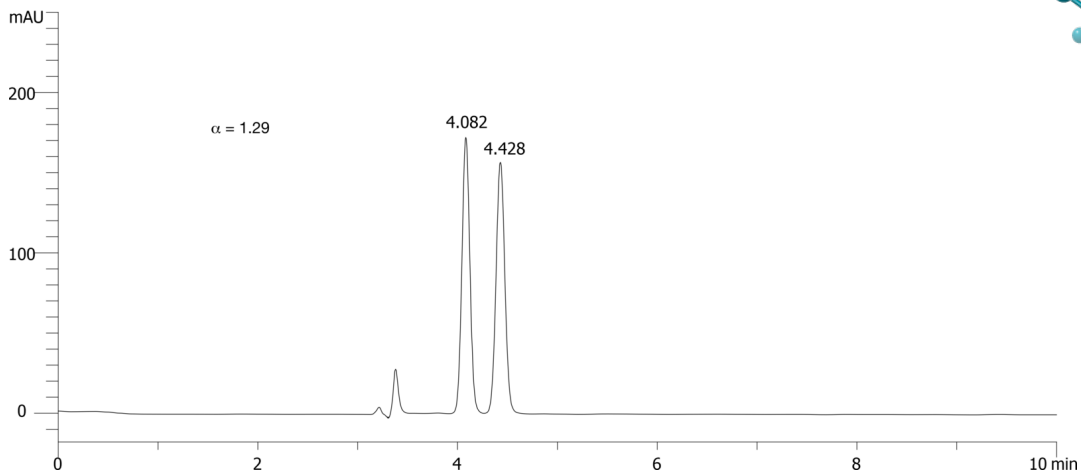
Column: Lux® 5 µm Cellulose-4, LC Column 250 x 4.6 mm, Ea
Dimensions: 250 x 4.6 mm ID
Order No: 00G-4491-E0
Elution Type: Isocratic
Eluent A: MeOH / 20mM NH₄HCO₃+0.1%DEA (90:10) DEA (0.1%)
Gradient

Step No.	Time (min)	Pct A
1	0	100

Profile:
Flow Rate: 1 mL/min
Col. Temp.: ambient
Detection: UV-Vis Abs.-Variable Wave.(UV) @ 220 nm (ambient)
21832



Products used in this application:



ANALYTES:

- 1 Simeconazole
Retention Time: 4.082 min
- 2 Simeconazole
Retention Time: 4.428 min

