

# HPLC Application

ID No.: 21885

## PLP and PA in Human sera/plasma on Gemini-NX 3u, C18, 100x4.6 by HPLC w Fluorescence Detection-5

**Column:** Gemini<sup>®</sup> 3  $\mu$ m NX-C18 110 Å, LC Column 100 x 4.6 mm, Ea

**Dimensions:** 100 x 4.6 mm ID

**Order No:** 00D-4453-E0

**Elution Type:** Gradient

**Eluent A:** 20mmol/L Na<sub>2</sub>HPO<sub>4</sub> + 1mL acetic acid in 1L DI Water

**Eluent B:** ACN : MeOH (70:30)

Gradient Profile:	Step No.	Time (min)	Pct A	Pct B
	1	0	95	5
	2	5	40	60
	3	5.1	5	95
	4	6	95	5
	5	7	95	5

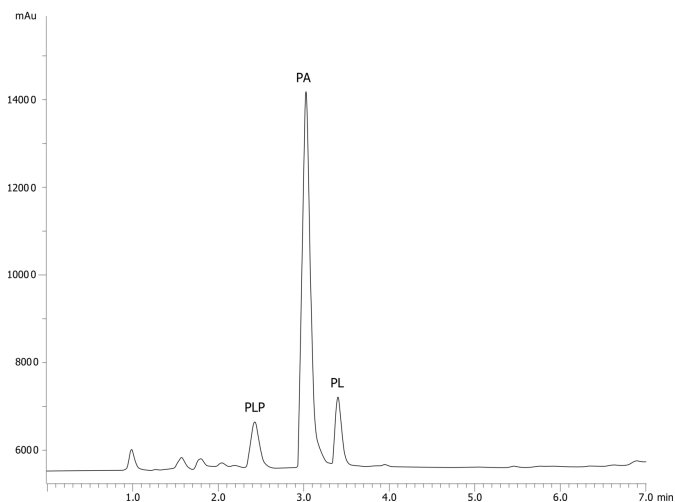
**Flow Rate:** 1 mL/min

**Col. Temp.:** 35 °C

**Detection:** Fluorescence (FLUOR) @ Ex 360 nm (ambient)

**Detector Info:** Shimadzu RF-20A

21885



### ANALYTES:

- 1 Pyridoxal 5'-phosphate  
Retention Time: 2.584 min
- 2 4-Pyridoxic acid  
Retention Time: 3.143 min
- 3 Pyridoxal  
Retention Time: 3.474 min



Products used in this application:

