

# HPLC Application

ID No.: 21927

## Paroxetine EP method on Kinetex 5 $\mu$ m C8 250x4.6 mm

**Column:** Kinetex<sup>®</sup> 5 $\mu$ m C8 100 Å, LC Column 250 x 4.6 mm, Ea

**Dimensions:** 250 x 4.6 mm ID

**Order No:** 00G-4608-E0

**Elution Type:** Gradient

**Eluent A:** TFA/THF/Water (5:100:900)

**Eluent B:** TFA/THF/ACN (5:100:900)

Gradient Profile:	Step No.	Time (min)	Pct A	Pct B
	1	0	80	20
	2	30	80	20
	3	50	20	80
	4	55	20	80
	5	60	80	20
	6	65	80	20

**Flow Rate:** 1 mL/min

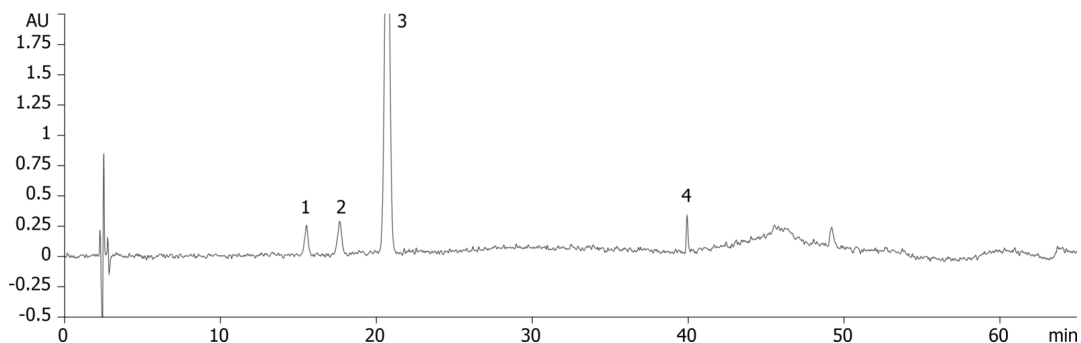
**Col. Temp.:** 40 °C

**Detection:** UV-Vis Abs.-Variable Wave.(UV) @ 295 nm (ambient)

21927



Products used in this application:



### ANALYTES:

- 1 Impurity A
- 2 Impurity E
- 3 Paroxetine
- 4 Impurity C

