

HPLC Application

ID No.: 21939

EPA 539 on Gemini NX-C18 3 um 100 X 2.0 mm

Column: Gemini[®] 3 μ m NX-C18 110 Å, LC Column 100 x 2 mm, Ea

Dimensions: 100 x 2 mm ID

Order No: 00D-4453-B0

Elution Type: Gradient

Eluent A: 0.2% NH₄OH in water

Eluent B: 0.2% NH₄OH in MeOH

Gradient Profile:	Step No.	Time (min)	Pct A	Pct B
	1	0	65	35
	2	0.01	65	35
	3	0.6	35	65
	4	7.5	35	65
	5	8.5	15	85
	6	13	15	85
	7	13.01	65	35
	8	15	65	35

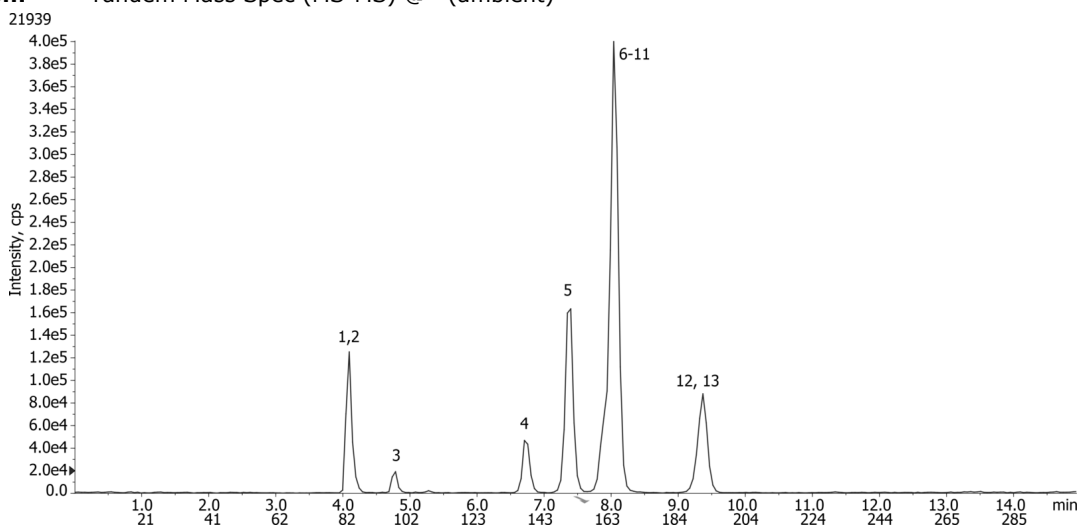
Flow Rate: 0.2 mL/min

Col. Temp.: ambient

Detection: Tandem Mass Spec (MS-MS) @ (ambient)



Products used in this application:



EPA 539 on Gemini NX-C18 3 um 100 X 2.0 mm

ANALYTES:

- 1 Estriol
- 2 Bisphenol A-d16
- 3 Equilin
- 4 Estrone
- 5 beta-Estradiol
- 6 Ethynylestradiol-d4
- 7 17a-Ethynlestradiol
- 8 Androstenedione
- 9 Testosterone-d3
- 10 Testosterone
- 11 IS-13C6-estradiol
- 12 IS-Estriol d2
- 13 IS-13C2-Ethynylestradiol

