

HPLC Application

ID No.: 21941

Glucosinolates Standards on Luna HILIC 3 μ 100x4.6mm

Column: Luna[®] 3 μ m HILIC 200 \AA , LC Column 100 x 4.6 mm, Ea

Dimensions: 100 x 4.6 mm ID

Order No: 00D-4449-E0

Elution Type: Isocratic

Eluent A: 30mM Ammonium Formate 85:15 ACN:H₂O, ~pH 7

Eluent B: Acetonitrile

Gradient Profile:	Step No.	Time (min)	Pct A	Pct B
	1	8	70	30

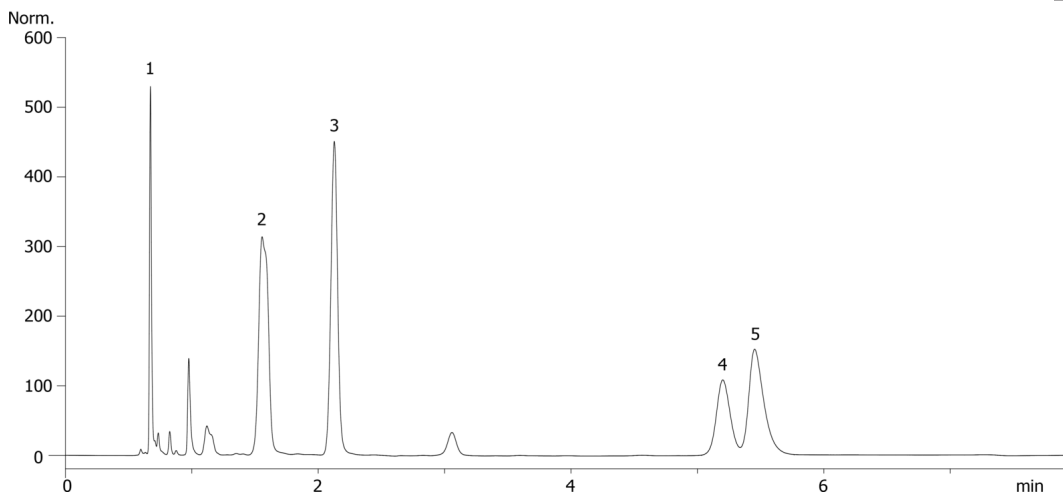
Flow Rate: 2 mL/min

Col. Temp.: 40 $^{\circ}$ C

Detection: UV-Vis Abs.-Variable Wave.(UV) @ 205 nm (25 $^{\circ}$ C)
21941



Products used in this application:



ANALYTES:

- 1** Sulforaphane
Retention Time: 0.672 min
- 2** Glucotropaeolin
Retention Time: 1.557 min
- 3** Sinigrin
Retention Time: 2.127 min
- 4** Glucoraphanin
Retention Time: 5.2 min
- 5** Glucoiberin
Retention Time: 5.453 min

