

HPLC Application

ID No.: 21942

Glucosinolates in Mustard Seed Extract on Luna HILIC 3 μ 100x4.6mm

Column: Luna® 3 μ m HILIC 200 Å, LC Column 100 x 4.6 mm, Ea

Dimensions: 100 x 4.6 mm ID

Order No: 00D-4449-E0

Elution Type: Isocratic

Eluent A: 30mM Ammonium Formate, pH 7.0 in 85/15 ACN:H2O

Eluent B: Acetonitrile

Gradient Profile:	Step No.	Time (min)	Pct A	Pct B
	1	8	70	30

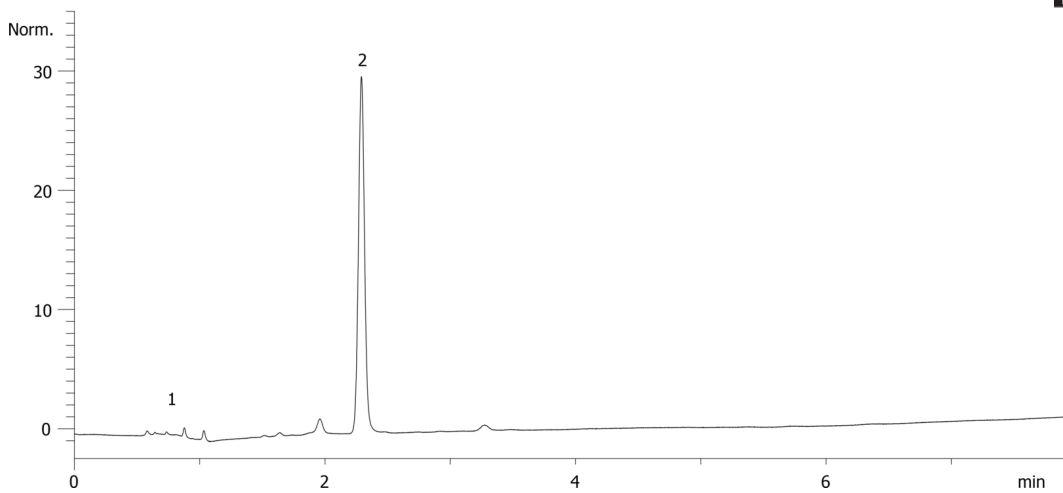
Flow Rate: 2 mL/min

Col. Temp.: ambient

Detection: UV-Vis Abs.-Variable Wave.(UV) @ 205 nm (25 °C)
21942



Products used in this application:



ANALYTES:

- 1** Sulforaphane
Retention Time: 0.672 min
- 2** Sinigrin
Retention Time: 2.291 min