

HPLC Application

ID No.: 21951

Mycotoxin analysis using Kinetex 2.6u Biphenyl 50x2.1mm

Column: Kinetex[®] 2.6 μ m Biphenyl 100 \AA , LC Column 50 x 2.1 mm, Ea

Dimensions: 50 x 2.1 mm ID

Order No: 00B-4622-AN

Elution Type: Gradient

Eluent A: 5mM ammonium acetate with 0.1% acetic acid

Eluent B: Methanol with 5mM ammonium acetate with 0.1% acetic acid

Gradient Profile:	Step No.	Time (min)	Pct A	Pct B
	1	0	98	2
	2	2	98	2
	3	5	20	80
	4	5.2	2	98
	5	8	2	98
	6	8.01	98	2
	7	11	98	2

Flow Rate: 0.45 mL/min

Col. Temp.: ambient

Detection: Mass Spectrometer (MS) @ amu (ambient)

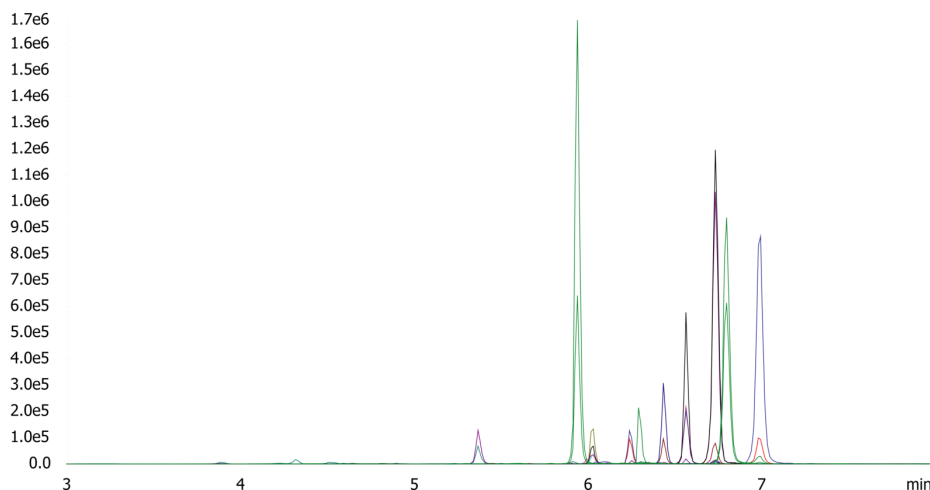
Detector Info:

21951

SCIEX<



Products used in this application:



Mycotoxin analysis using Kinetex 2.6u Biphenyl 50x2.1mm

ANALYTES:

- 1** 15-Acetyldeoxynivalenol
- 2** DAS
- 3** FB1
- 4** HT2 Toxin
- 5** FB2
- 6** T2 Toxin
- 7** Aflatoxin M1
- 8** Aflatoxin G2
- 9** Ochratoxin A
- 10** Aflatoxin G1
- 11** Aflatoxin B2
- 12** Aflatoxin B1

