

HPLC Application

ID No.: 21972

Opiates using Kinetex 2.6u Biphenyl 50x2.1mm

Column: Kinetex[®] 2.6 μ m Biphenyl 100 Å, LC Column 50 x 2.1 mm, Ea

Dimensions: 50 x 2.1 mm ID

Order No: 00B-4622-AN

Elution Type: Gradient

Eluent A: Water with 0.1% Formic acid

Eluent B: Methanol with 0.1% Formic acid

Gradient Profile:	Step No.	Time (min)	Pct A	Pct B
	1	0	95	5
	2	4	5	95
	3	4.5	5	95
	4	4.51	95	5
	5	6	95	5

Flow Rate: 0.5 mL/min

Col. Temp.: 40 °C

Detection: Electrospray Mass Spec (ESMS) @ (ambient)

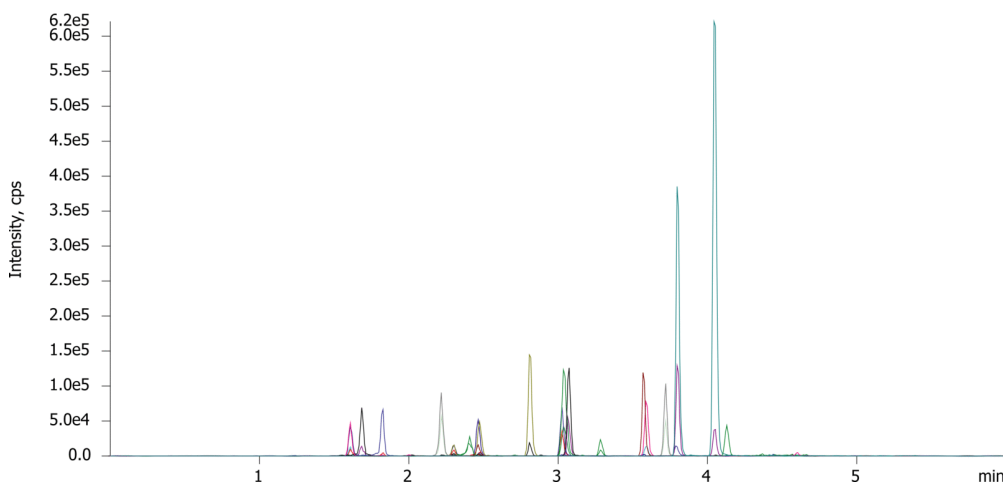
Detector Info: <a target="_blank"

href="https://sciex.com/products/mass-spectrometers?utm_campaign=2019%20application%20search&utm_source=phenomenex&utm_medium=referral">SCIE<

21972



Products used in this application:



Opiates using Kinetex 2.6u Biphenyl 50x2.1mm

ANALYTES:

- 1 Morphine
- 2 Oxymorphone
- 3 Hydromorphone
- 4 Naloxone
- 5 Codeine
- 6 Oxycodone
- 7 Naltrexone
- 8 Hydrocodone
- 9 Norfentanyl
- 10 Tramadol
- 11 Normeperidine
- 12 Meperidine
- 13 Meprobamate
- 14 Norbuprenorphine
- 15 Fentanyl
- 16 Buprenorphine
- 17 Carisoprodol
- 18 Sufentanil
- 19 Methadone

