

# HPLC Application

ID No.: 21992

## Morphine isobars using Kinetex 2.6u Biphenyl 50x2.1mm

**Column:** Kinetex<sup>®</sup> 2.6  $\mu$ m Biphenyl 100  $\text{\AA}$ , LC Column 50 x 2.1 mm, Ea

**Dimensions:** 50 x 2.1 mm ID

**Order No:** 00B-4622-AN

**Elution Type:** Gradient

**Eluent A:** Water with 0.1% Formic acid

**Eluent B:** Methanol with 0.1% Formic acid

Gradient Profile:	Step No.	Time (min)	Pct A	Pct B
	1	0	95	5
	2	4	5	95
	3	4.5	5	95
	4	4.51	95	5
	5	6	95	5

**Flow Rate:** 0.5 mL/min

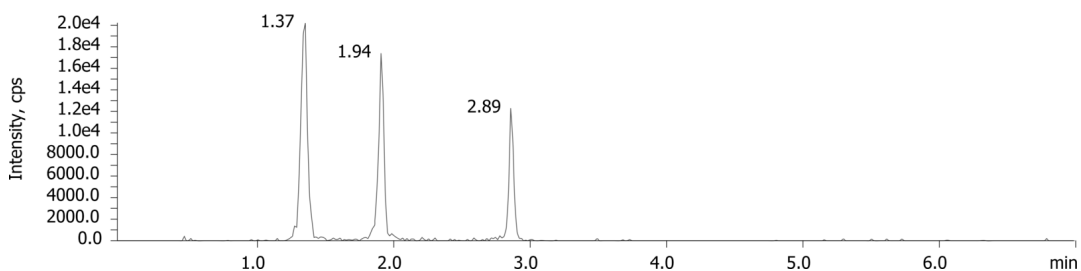
**Col. Temp.:** 40  $^{\circ}$ C

**Detection:** Electrospray Mass Spec (ESMS) @ (ambient)

**Detector Info:** <a target="\_blank"

href="https://sciex.com/products/mass-spectrometers?utm\_campaign=2019%20application%20search&utm\_source=phenomenex&utm\_medium=referral">SCIEX<

21992



Products used in this application:



### ANALYTES:

- 1 Morphine
- 2 Hydromorphone
- 3 Norhydrocodone

