

# HPLC Application

ID No.: 22008

## Alprenolol on Lux 5µm Cellulose-2 in NP

**Column:** Lux<sup>®</sup> 5 µm Cellulose-2, LC Column 250 x 4.6 mm, Ea

**Dimensions:** 250 x 4.6 mm ID

**Order No:** 00G-4457-E0

**Elution Type:** Isocratic

**Eluent A:** Hexane/EtOH (90:10) 0.1 % DEA

Gradient	Step No.	Time (min)	Pct A
<b>Profile:</b>	<b>1</b>	0	100

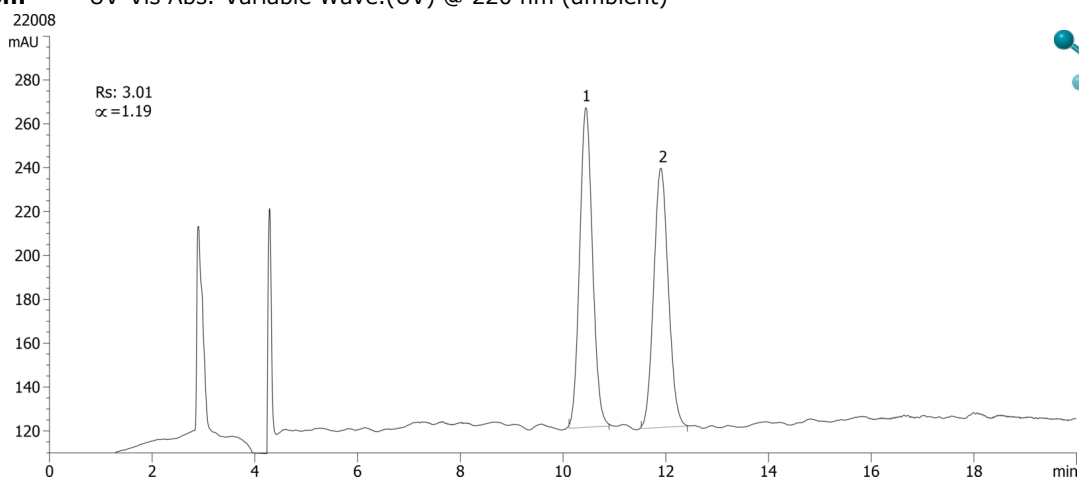
**Flow Rate:** 1 mL/min

**Col. Temp.:** ambient

**Detection:** UV-Vis Abs.-Variable Wave.(UV) @ 220 nm (ambient)



Products used in this application:



### ANALYTES:

**1** Alprenolol

Retention Time: 10.442 min

**2** Alprenolol

Retention Time: 11.902 min

