

Polyphenol Analysis of Red Wine by LC/MS/MS on Luna 3 μm C8(2)

Column: Luna® 3 μm C8(2) 100 Å, LC Column 50 x 2 mm, Ea

Dimensions: 50 x 2 mm ID

Order No: 00B-4248-B0

Elution Type: Gradient

Eluent A: 5 mM ammonium acetate w/ 0.5 % Acetic acid

Eluent B: 5 mM ammonium acetate in MeOH w/ 0.5 % Acetic acid

Gradient Profile:	Step No.	Time (min)	Pct A	Pct B
	2	0	98	2
	3	3	20	80
	4	5	20	80
	5	5.01	98	2
	6	8	98	2

Flow Rate: 0.5 mL/min

Col. Temp.: ambient

Detection: Tandem Mass Spec (MS-MS) @ (ambient)

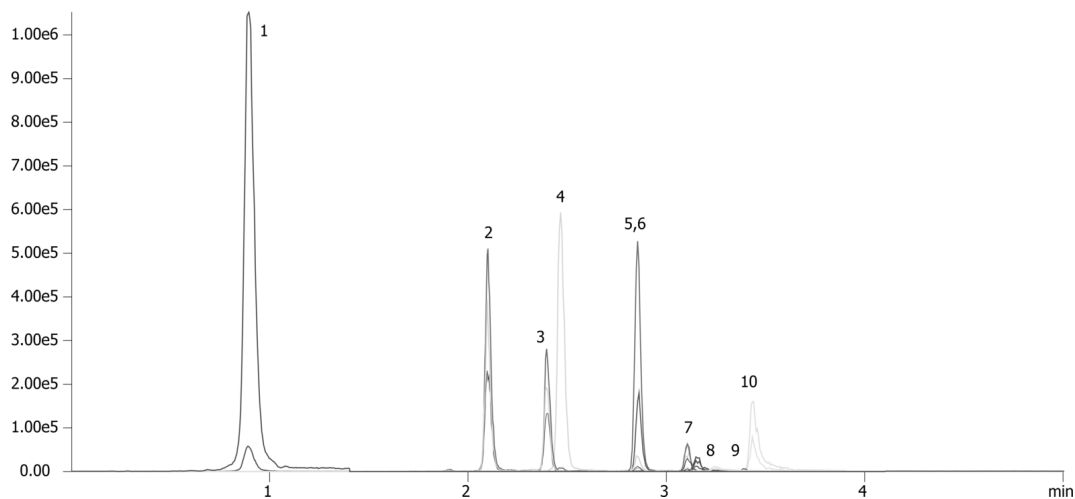
Detector Info:

22019

SCIEX



Products used in this application:



Polyphenol Analysis of Red Wine by LC/MS/MS on Luna 3 μ m C8(2)

ANALYTES:

- 1 Gallic acid
- 2 Catechin
- 3 Epicatechin
- 4 Caffeic acid
- 5 p-Coumaric acid
- 6 p-Coumaric acid-13C3
- 7 Ferulic acid
- 8 trans-Resveratrol
- 9 trans-Resveratrol-13C6
- 10 Myricetin
- 11 cis-Resveratrol
- 12 Quercetin

