

HPLC Application

ID No.: 22021

Catechin Isomers in Red Wine by LC/MS/MS on Luna 3 μm C8(2)

Column: Luna® 3 μm C8(2) 100 Å, LC Column 50 x 2 mm, Ea

Dimensions: 50 x 2 mm ID

Order No: 00B-4248-B0

Elution Type: Gradient

Eluent A: 5 mM ammonium acetate w/ 0.5 % Acetic acid

Eluent B: 5 mM ammonium acetate in MeOH w/ 0.5 % Acetic acid

Gradient Profile:	Step No.	Time (min)	Pct A	Pct B
	2	0	98	2
	3	3	20	80
	4	5	20	80
	5	5.01	98	2
	6	8	98	2

Flow Rate: 0.5 mL/min

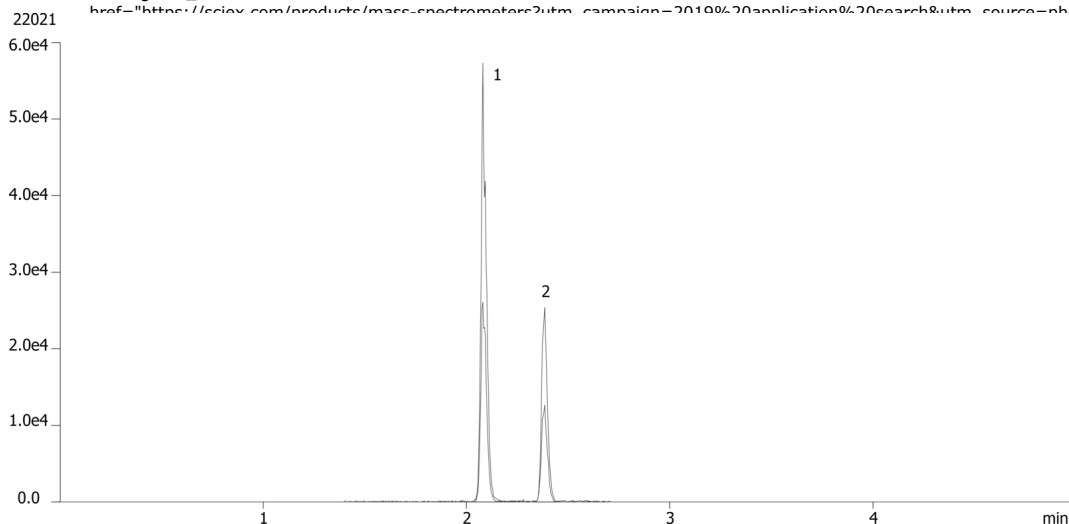
Col. Temp.: ambient

Detection: Tandem Mass Spec (MS-MS) @ (ambient)

Detector Info:

<a target="_blank"

href="https://sciex.com/products/mass-spectrometers?utm_campaign=2019%20application%20search&utm_source=phenomenex&utm_medium=referral">SCIEX<



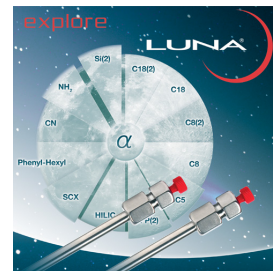
ANALYTES:

1 Catechin

Retention Time: 2.08 min

2 Epicatechin

Retention Time: 2.38 min



Products used in this application:

