

HPLC Application

ID No.: 22082

Low Level Antibiotic Extract from Ground Meat on Kinetex XB-C18

Column: Kinetex® 2.6 µm XB-C18 100 Å, LC Column 100 x 2.1 mm, Ea

Dimensions: 100 x 2.1 mm ID

Order No: 00D-4496-AN

Elution Type: Gradient

Eluent A: 0.1% Formic Acid in DI H₂O

Eluent B: 0.1% Formic Acid in 50:50 MeOH:ACN

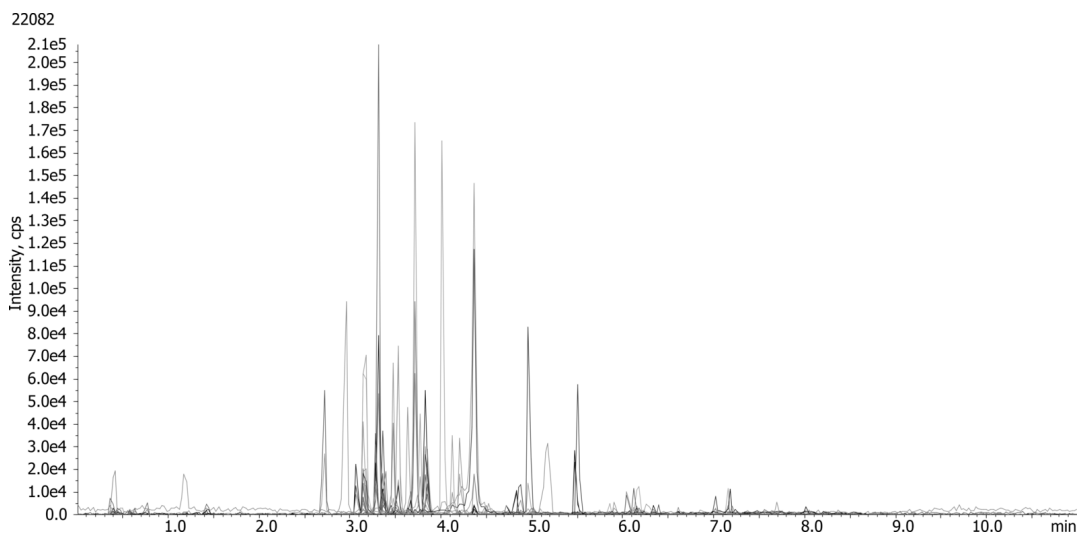
Gradient Profile:	Step No.	Time (min)	Pct A	Pct B
	1	0	95	5
	2	1	95	5
	3	4	50	50
	4	6	5	95
	5	7.5	5	95
	6	7.51	95	5
	7	10	95	5

Flow Rate: 450 mL/min

Col. Temp.: 50 °C

Detection: Tandem Mass Spec (MS-MS) @ (1 °C)

Detector Info: API 5000



Products used in this application:



Low Level Antibiotic Extract from Ground Meat on Kinetex XB-C18

ANALYTES:

- 1 AMOXICILLIN
- 2 SULFADIAZINE
- 3 SULFATHIAZOLE
- 4 SULFAPYRIDINE
- 5 4-EPITETRACYCLINE
- 6 TETRACYCLINE
- 7 TRIMETHOPRIM
- 8 MARBOFLOXACIN
- 9 SULFAMERAZINE
- 10 CEFQUINOME
- 11 AMPICILLIN
- 12 CEFALONIUM
- 13 4-EPIOXYTETRACYCLINE
- 14 OXYTETRACYCLINE
- 15 CIPROFLOXACIN
- 16 CEFAPIRIN
- 17 DANOFLOXACIN
- 18 ENROFLOXACIN
- 19 SULFAMETHAZINE
- 20 DIFLOXACIN
- 21 SARAFLOXACIN
- 22 NEOSPIRAMYCIN
- 23 SPIRAMYCIN
- 24 SULFAMETHOXAZOLE
- 25 DOXYCYCLINE
- 26 TILMICOSIN
- 27 CEFOPERAZONE
- 28 SULFAQUINOXALINE
- 29 TIAMULIN
- 30 TYLOSIN A
- 31 VALNEMULIN
- 32 OXACILLIN
- 33 CLOXACILLIN
- 34 DICLOXACILLIN
- 35 NAFCILLIN

