

## ns spiked Ground Meat Extract for antibiotic analysis on Kinetex XB-C18

**Column:** Kinetex® 2.6 µm XB-C18 100 Å, LC Column 100 x 2.1 mm, Ea

**Dimensions:** 100 x 2.1 mm ID

**Order No:** 00D-4496-AN

**Elution Type:** Gradient

**Eluent A:** 0.1% Formic Acid in DI H<sub>2</sub>O

**Eluent B:** 0.1% Formic Acid in 50:50 MeOH:ACN

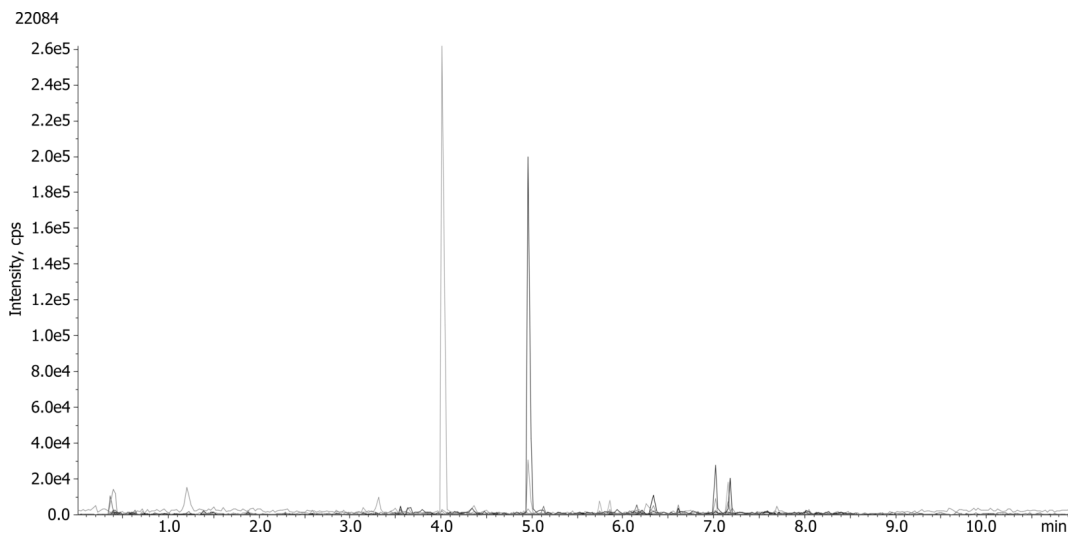
Gradient Profile:	Step No.	Time (min)	Pct A	Pct B
	1	0	95	5
	2	1	95	5
	3	4	50	50
	4	6	5	95
	5	7.5	5	95
	6	7.51	95	5
	7	10	95	5

**Flow Rate:** 450 mL/min

**Col. Temp.:** 50 °C

**Detection:** Tandem Mass Spec (MS-MS) @ (1 °C)

**Detector Info:** API 5000



### ANALYTES:

1 N/A



Products used in this application:

