

# HPLC Application

ID No.: 22104

## Full Pain Panel using Kinetex 2.6u Biphenyl 50x3.0mm

**Column:** Kinetex® 2.6 µm Biphenyl 100 Å, LC Column 50 x 3.0 mm, Ea

**Dimensions:** 50 x 3 mm ID

**Order No:** 00B-4622-Y0

**Elution Type:** Gradient

**Eluent A:** Water with 0.1% formic acid

**Eluent B:** Methanol with 0.1% formic acid

<b>Gradient Profile:</b>	<b>Step No.</b>	<b>Time (min)</b>	<b>Pct A</b>	<b>Pct B</b>
	<b>1</b>	0	90	10
	<b>2</b>	0.5	90	10
	<b>3</b>	2	75	25
	<b>4</b>	4.5	20	80
	<b>5</b>	4.51	15	85
	<b>6</b>	5.5	15	85
	<b>7</b>	7	90	10

**Flow Rate:** 0.6 mL/min

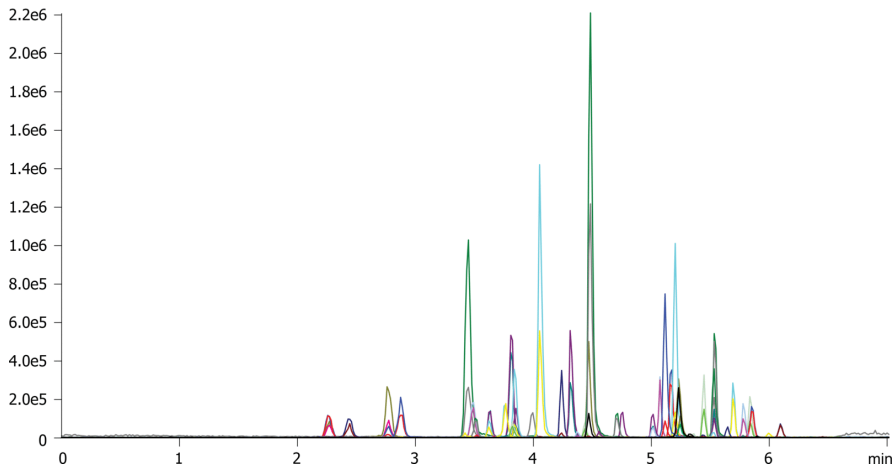
**Col. Temp.:** ambient

**Detection:** Tandem Mass Spec (MS-MS) @ (40 °C)

22104



Products used in this application:



## Full Pain Panel using Kinetex 2.6u Biphenyl 50x3.0mm

### ANALYTES:

- |                             |                    |
|-----------------------------|--------------------|
| <b>1</b> Morphine           | <b>41</b> Diazepam |
| <b>2</b> Oxymorphone        |                    |
| <b>3</b> Hydromorphone      |                    |
| <b>4</b> Amphetamine        |                    |
| <b>5</b> Methamphetamine    |                    |
| <b>6</b> MDA                |                    |
| <b>7</b> Naloxone           |                    |
| <b>8</b> Codeine            |                    |
| <b>9</b> 6-MAM              |                    |
| <b>10</b> Oxycodone         |                    |
| <b>11</b> MDMA              |                    |
| <b>12</b> Naltrexone        |                    |
| <b>13</b> Hydrocodone       |                    |
| <b>14</b> MDEA              |                    |
| <b>15</b> Norfentanyl       |                    |
| <b>16</b> Tramadol          |                    |
| <b>17</b> Benzoylcegonine   |                    |
| <b>18</b> Meprobamate       |                    |
| <b>19</b> Normeperidine     |                    |
| <b>20</b> Meperidine        |                    |
| <b>21</b> Norbuprenorphine  |                    |
| <b>22</b> Fentanyl          |                    |
| <b>23</b> Buprenorphine     |                    |
| <b>24</b> Flurazepam        |                    |
| <b>25</b> PCP               |                    |
| <b>26</b> Carisoprodol      |                    |
| <b>27</b> Propoxyphene      |                    |
| <b>28</b> Midazolam         |                    |
| <b>29</b> Sufentanil        |                    |
| <b>30</b> Norpropoxyphene   |                    |
| <b>31</b> EDDP              |                    |
| <b>32</b> Lorazepam         |                    |
| <b>33</b> Methadone         |                    |
| <b>34</b> Clonazepam        |                    |
| <b>35</b> Oxazepam          |                    |
| <b>36</b> Hydroxyalprazolam |                    |
| <b>37</b> Nordiazepam       |                    |
| <b>38</b> Flunitrazepam     |                    |
| <b>39</b> Temazepam         |                    |
| <b>40</b> Alprazolam        |                    |

