

# HPLC Application

ID No.: 22108

## Pain Panel Opiates using Kinetex 2.6u Biphenyl 50x3.0mm

**Column:** Kinetex<sup>®</sup> 2.6  $\mu$ m Biphenyl 100 Å, LC Column 50 x 3.0 mm, Ea

**Dimensions:** 50 x 3 mm ID

**Order No:** 00B-4622-Y0

**Elution Type:** Gradient

**Eluent A:** Water with 0.1% formic acid

**Eluent B:** Methanol with 0.1% formic acid

Gradient Profile:	Step No.	Time (min)	Pct A	Pct B
	1	0	90	10
	2	0.5	90	10
	3	2	75	25
	4	4.5	20	80
	5	4.51	15	85
	6	5.5	15	85
	7	7	90	10

**Flow Rate:** 0.6 mL/min

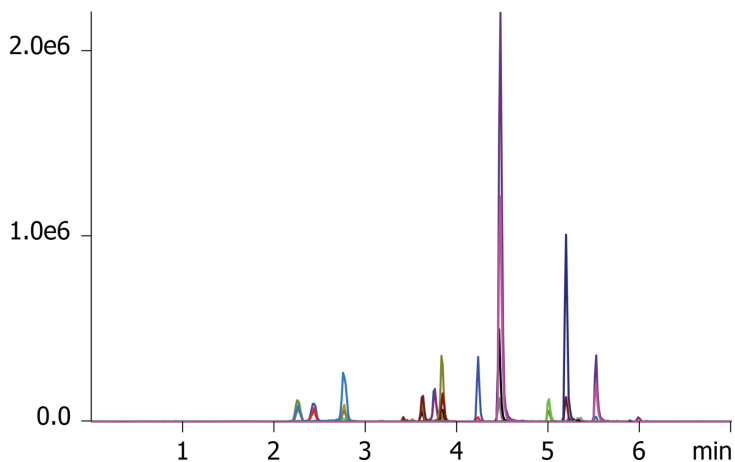
**Col. Temp.:** 40 °C

**Detection:** Tandem Mass Spec (MS-MS) @ (40 °C)

22108



Products used in this application:



## Pain Panel Opiates using Kinetex 2.6u Biphenyl 50x3.0mm

### ANALYTES:

- 1 Morphine
- 2 Oxymorphone
- 3 Hydromorphone
- 4 Naloxone
- 5 Codeine
- 6 6-MAM
- 7 Oxycodone
- 8 Naltrexone
- 9 Hydrocodone
- 10 Norfentanyl
- 11 Tramadol
- 12 Normeperidine
- 13 Meperidine
- 14 Norbuprenorphine
- 15 Fentanyl
- 16 Buprenorphine
- 17 Propoxyphene
- 18 Norpropoxyphene
- 19 EDDP
- 20 Methadone

