

# HPLC Application

ID No.: 22109

## Pain Panel Benzodiazapines using Kinetex 2.6u Biphenyl 50x3.0mm

**Column:** Kinetex® 2.6 µm Biphenyl 100 Å, LC Column 50 x 3.0 mm, Ea

**Dimensions:** 50 x 3 mm ID

**Order No:** 00B-4622-Y0

**Elution Type:** Gradient

**Eluent A:** Water with 0.1% formic acid

**Eluent B:** Methanol with 0.1% formic acid

<b>Gradient Profile:</b>	<b>Step No.</b>	<b>Time (min)</b>	<b>Pct A</b>	<b>Pct B</b>
	<b>1</b>	0	90	10
	<b>2</b>	0.5	90	10
	<b>3</b>	2	75	25
	<b>4</b>	4.5	20	80
	<b>5</b>	4.51	15	85
	<b>6</b>	5.5	15	85
	<b>7</b>	7	90	10

**Flow Rate:** 0.6 mL/min

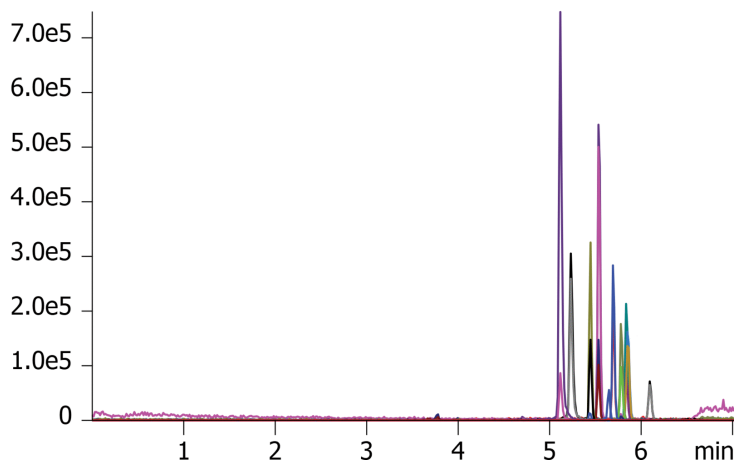
**Col. Temp.:** 40 °C

**Detection:** Tandem Mass Spec (MS-MS) @ (40 °C)

22109



Products used in this application:



## Pain Panel Benzodiazapines using Kinetex 2.6u Biphenyl 50x3.0mm

### ANALYTES:

- 1 Flurazepam
- 2 Midazolam
- 3 Lorazepam
- 4 Clonazepam
- 5 Oxazepam
- 6 Hydroxyalprazolam
- 7 Nordiazepam
- 8 Flunitrazepam
- 9 Temazepam
- 10 Alprazolam
- 11 Diazepam

