

HPLC Application

ID No.: 22110

Misc. Drugs of Abuse using Kinetex 2.6u Biphenyl 50x3.0mm

Column: Kinetex[®] 2.6 μ m Biphenyl 100 Å, LC Column 50 x 3.0 mm, Ea

Dimensions: 50 x 3 mm ID

Order No: 00B-4622-Y0

Elution Type: Gradient

Eluent A: Water with 0.1% formic acid

Eluent B: Methanol with 0.1% formic acid

Gradient Profile:	Step No.	Time (min)	Pct A	Pct B
	1	0	90	10
	2	0.5	90	10
	3	2	75	25
	4	4.5	20	80
	5	4.51	15	85
	6	5.5	15	85
	7	7	90	10

Flow Rate: 0.6 mL/min

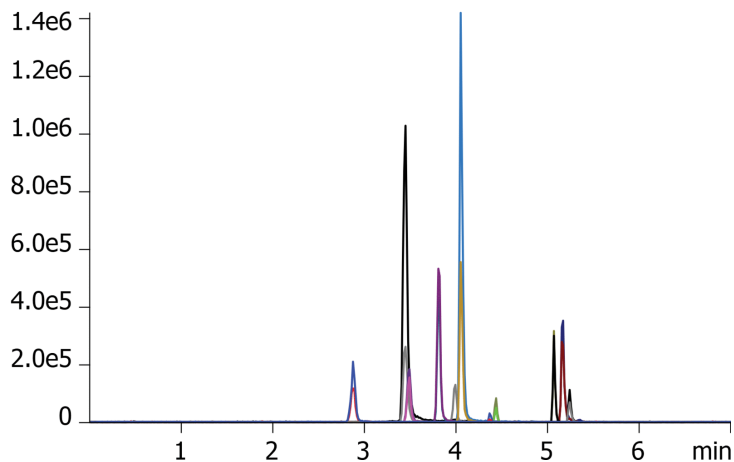
Col. Temp.: 40 °C

Detection: Tandem Mass Spec (MS-MS) @ (40 °C)

22110



Products used in this application:



Misc. Drugs of Abuse using Kinetex 2.6u Biphenyl 50x3.0mm

ANALYTES:

- 1 Amphetamine
- 2 Methamphetamine
- 3 MDA
- 4 MDMA
- 5 MDEA
- 6 Benzoylecgonine
- 7 Meprobamate
- 8 PCP
- 9 Carisoprodol
- 10 Sufentanil

