

HPLC Application

ID No.: 22121

Fast Pain Panel using Kinetex 2.6 u Biphenyl 50x3.0mm

Column: Kinetex[®] 2.6 μ m Biphenyl 100 Å, LC Column 50 x 3.0 mm, Ea

Dimensions: 50 x 3 mm ID

Order No: 00B-4622-Y0

Elution Type: Gradient

Eluent A: Water with 0.1% formic acid

Eluent B: Methanol with 0.1% formic acid

Gradient Profile:	Step No.	Time (min)	Pct A	Pct B
	1	0	90	10
	2	2.5	0	100
	3	3.5	0	100
	4	3.51	90	10
	5	5	90	10

Flow Rate: 0.7 mL/min

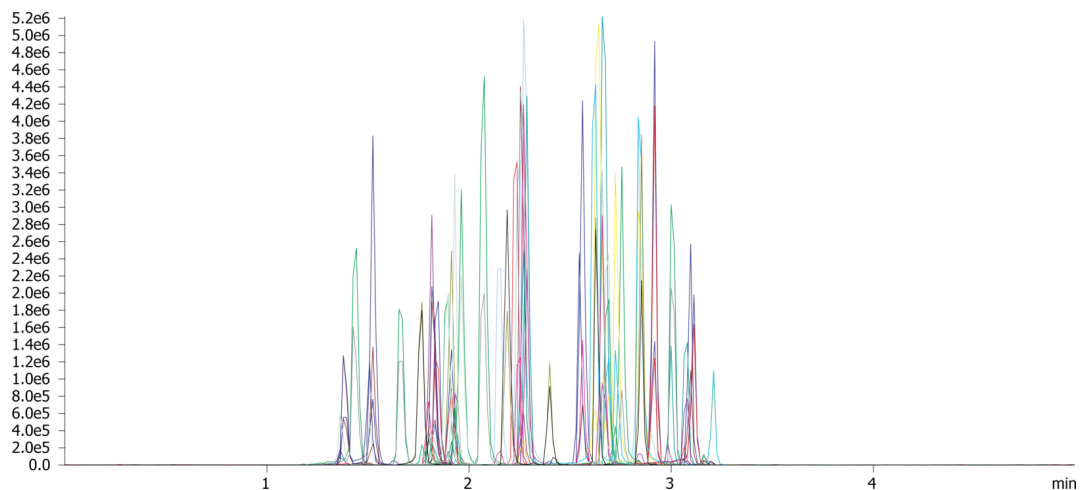
Col. Temp.: 40 °C

Detection: Tandem Mass Spec (MS-MS) @ (40 °C)

22121



Products used in this application:



Fast Pain Panel using Kinetex 2.6 u Biphenyl 50x3.0mm

ANALYTES:

- | | |
|-----------------------------|--------------------|
| 1 Morphine | 41 Diazepam |
| 2 Oxymorphone | |
| 3 Hydromorphone | |
| 4 Amphetamine | |
| 5 Naloxone | |
| 6 Methamphetamine | |
| 7 Codeine | |
| 8 MDA | |
| 9 Oxycodone | |
| 10 Naltrexone | |
| 11 Hydrocodone | |
| 12 MDMA | |
| 13 MDEA | |
| 14 Norfentanyl | |
| 15 Tramadol | |
| 16 Benzoylcegonine | |
| 17 Meperidine | |
| 18 Meprobamate | |
| 19 Norbuprenorphine | |
| 20 Fentanyl | |
| 21 Buprenorphine | |
| 22 Flurazepam | |
| 23 Carisoprodol | |
| 24 PCP | |
| 25 Propoxyphene | |
| 26 Sufentanil | |
| 27 6-MAM | |
| 28 Midazolam | |
| 29 Normeperidine | |
| 30 EDDP | |
| 31 Methadone | |
| 32 Lorazepam | |
| 33 Clonazepam | |
| 34 Norpropoxyphene | |
| 35 Oxazepam | |
| 36 Hydroxyalprazolam | |
| 37 Nordiazepam | |
| 38 Flunitrazepam | |
| 39 Temazepam | |
| 40 Alprazolam | |

