

HPLC Application

ID No.: 22122

Full Pain Panel using Kinetex 2.6u Biphenyl 50x2.1mm

Column: Kinetex[®] 2.6 μ m Biphenyl 100 \AA , LC Column 50 x 2.1 mm, Ea

Dimensions: 50 x 2.1 mm ID

Order No: 00B-4622-AN

Elution Type: Gradient

Eluent A: Water with 0.1% formic acid

Eluent B: Methanol with 0.1% formic acid

Gradient Profile:	Step No.	Time (min)	Pct A	Pct B
	1	0	90	10
	2	0.5	90	10
	3	2	75	25
	4	4.5	20	80
	5	4.51	15	85
	6	5.5	15	85
	7	5.51	90	10
	8	7	90	10

Flow Rate: 0.6 mL/min

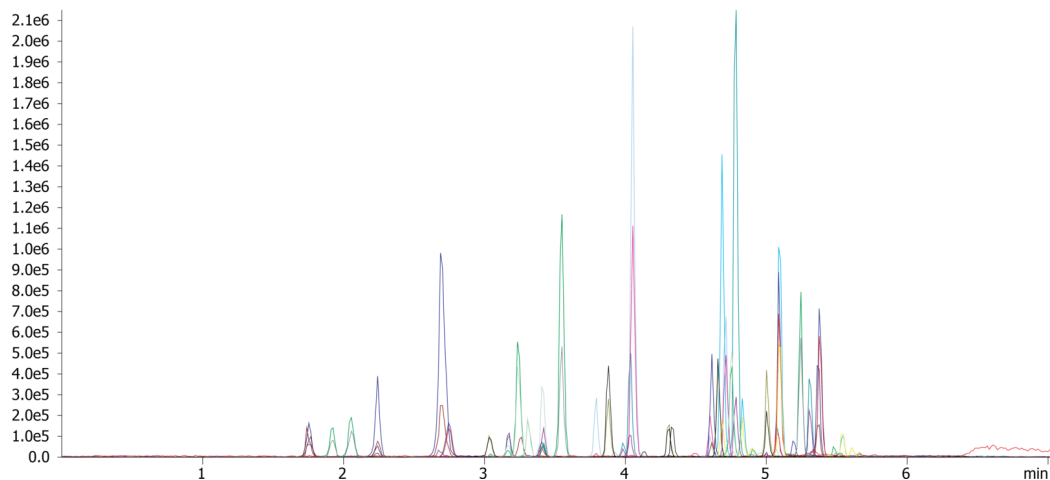
Col. Temp.: 40 °C

Detection: Tandem Mass Spec (MS-MS) @ (ambient)

22122



Products used in this application:



Full Pain Panel using Kinetex 2.6u Biphenyl 50x2.1mm

ANALYTES:

- | | |
|-----------------------------|--------------------|
| 1 Morphine | 41 Diazepam |
| 2 Oxymorphone | |
| 3 Hydromorphone | |
| 4 Amphetamine | |
| 5 Methamphetamine | |
| 6 MDA | |
| 7 Naloxone | |
| 8 Codeine | |
| 9 6-MAM | |
| 10 Oxycodone | |
| 11 MDMA | |
| 12 Naltrexone | |
| 13 Hydrocodone | |
| 14 MDEA | |
| 15 Norfentanyl | |
| 16 Tramadol | |
| 17 Benzoylcegonine | |
| 18 Meprobamate | |
| 19 Normeperidine | |
| 20 Meperidine | |
| 21 Norbuprenorphine | |
| 22 Fentanyl | |
| 23 Buprenorphine | |
| 24 Flurazepam | |
| 25 PCP | |
| 26 Carisoprodol | |
| 27 Propoxyphene | |
| 28 Midazolam | |
| 29 Sufentanil | |
| 30 Norpropoxyphene | |
| 31 EDDP | |
| 32 Lorazepam | |
| 33 Methadone | |
| 34 Clonazepam | |
| 35 Oxazepam | |
| 36 Hydroxyalprazolam | |
| 37 Nordiazepam | |
| 38 Flunitrazepam | |
| 39 Temazepam | |
| 40 Alprazolam | |

