

# HPLC Application

ID No.: 22128

## Prep loading on Yarra 5u SEC-2000 PREP: Fixed concentration, increased injection volume

**Column:** Yarra 5 µm SEC-2000 PREP, LC Column 300 x 21.2 mm, Ea

**Dimensions:** 300 x 21.2 mm ID

**Order No:** 00H-4619-P0

**Elution Type:** Isocratic

**Eluent A:** 100 mM Sodium Phosphate pH 6.8

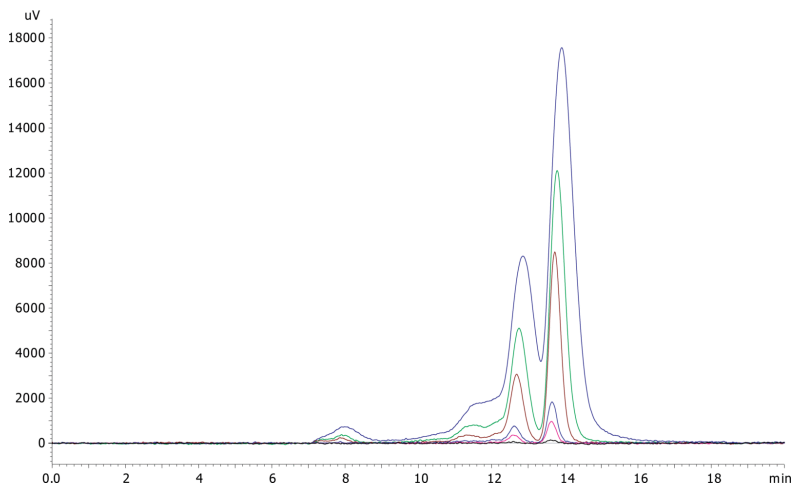
Gradient	Step No.	Time (min)	Pct A
<b>Profile:</b>	<b>1</b>	0	100

**Flow Rate:** 5 mL/min

**Col. Temp.:** ambient

**Detection:** UV-Vis Abs.-Variable Wave.(UV) @ 220 nm (ambient)

22128



### ANALYTES:

- 1 Bovine Serum Albumin
- 2 Myoglobin



Products used in this application:

