

Aeris PEPTIDE 3.6 µm XB-C18: peptide mix, high flow rate

Column: Aeris™ 3.6 µm PEPTIDE XB-C18 100 Å, LC Column 50 x 2.1 mm, Ea

Dimensions: 50 x 2.1 mm ID

Order No: 00B-4507-AN

Elution Type: Gradient

Eluent A: 0.1% Formic Acid in Water

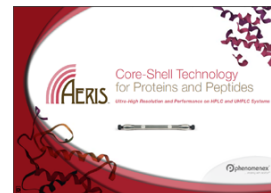
Eluent B: 0.1% Formic Acid in acetonitrile

Gradient Profile:	Step No.	Time (min)	Pct A	Pct B
	1	0	95	5
	2	1.26	35	65
	3	1.6	5	95
	4	2	5	95

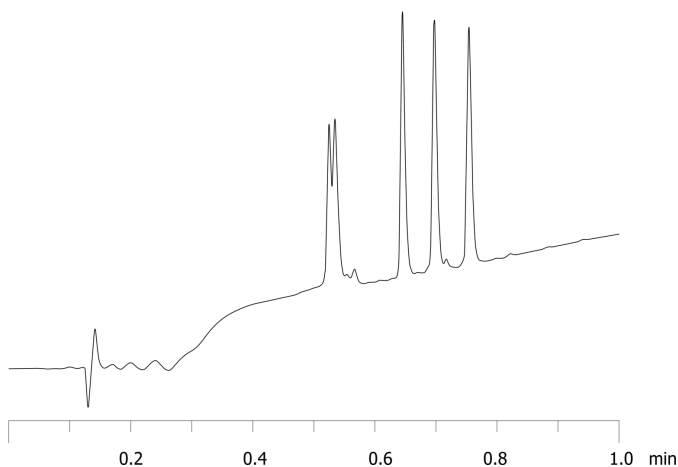
Flow Rate: 0.9 mL/min

Col. Temp.: ambient

Detection: UV-Vis Abs.-Variable Wave.(UV) @ 214 nm (ambient)
22132



Products used in this application:



ANALYTES:

- 1 bradykinin
- 2 dynorphin A
- 3 angiotensin II
- 4 met enkephalin
- 5 leu enkephalin

