

HPLC Application

ID No.: 22145

Steroid Panel on Kinetex 2.6u Biphenyl 50x3.0

Column: Kinetex[®] 2.6 μ m Biphenyl 100 Å, LC Column 50 x 3.0 mm, Ea

Dimensions: 50 x 3 mm ID

Order No: 00B-4622-Y0

Elution Type: Gradient

Eluent A: Water

Eluent B: Acetonitrile

Gradient Profile:	Step No.	Time (min)	Pct A	Pct B
	1	0	80	20
	2	5	40	60
	3	6	40	60

Flow Rate: 0.6 mL/min

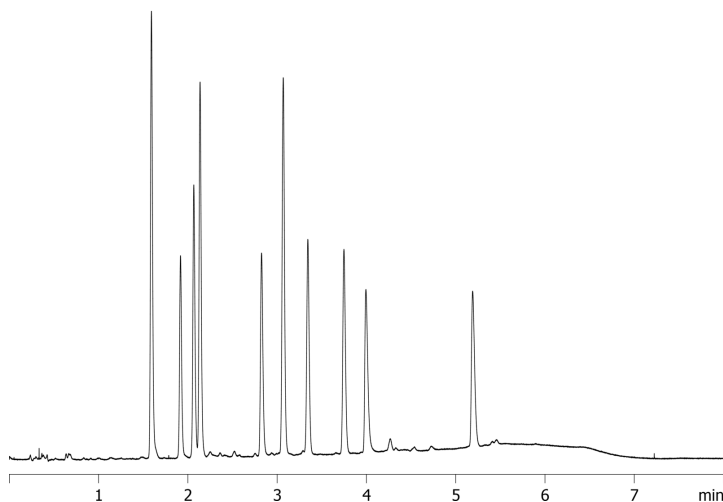
Col. Temp.: 25 °C

Detection: UV-Vis Abs.-Variable Wave.(UV) @ (ambient)

22145



Products used in this application:



Steroid Panel on Kinetex 2.6u Biphenyl 50x3.0

ANALYTES:

- 1 Estriol
- 2 Hydrocortisone
- 3 Predisone
- 4 Cortisone
- 5 Corticosterone
- 6 Beta-Estradiol
- 7 Cortisone Acetate
- 8 21-Hydroxyprogesterone
- 9 17-Hydroxyprogesterone
- 10 Deoxycorticosterone

