

HPLC Application

ID No.: 22146

Sulfur Antibiotics on Kinetex 2.6u Biphenyl 50x3.0

Column: Kinetex[®] 2.6 μ m Biphenyl 100 \AA , LC Column 50 x 3.0 mm, Ea

Dimensions: 50 x 3 mm ID

Order No: 00B-4622-Y0

Elution Type: Gradient

Eluent A: Water + 0.1% Formic Acid

Eluent B: Acetonitrile + 0.1% Formic Acid

Gradient Profile:	Step No.	Time (min)	Pct A	Pct B
	1	0	95	5
	2	5	65	35
	3	6	65	35

Flow Rate: 0.6 mL/min

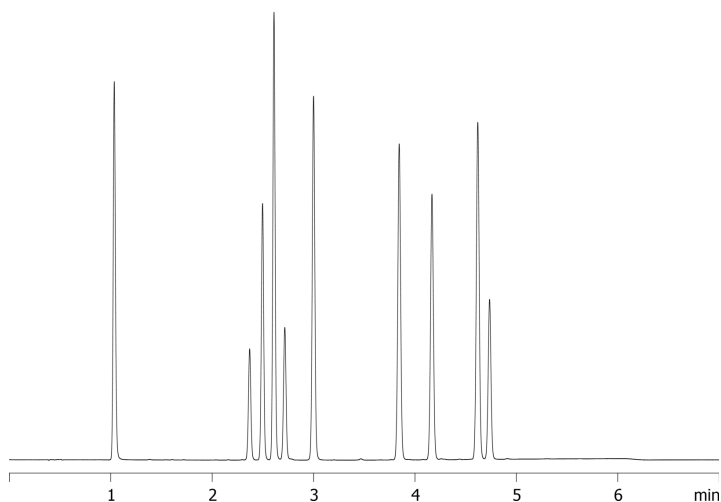
Col. Temp.: 20 $^{\circ}$ C

Detection: UV-Vis Abs.-Variable Wave.(UV) @ 260 nm (ambient)

22146



Products used in this application:



Sulfur Antibiotics on Kinetex 2.6u Biphenyl 50x3.0

ANALYTES:

- 1 Sulfanilamide
- 2 Sulfadiazine
- 3 Sulfapyridine
- 4 Sulfathiazole
- 5 Sulfamerazine
- 6 Sulfamethazine
- 7 Sulfadoxin
- 8 Sulfisoxazole
- 9 Sulfadimethoxine
- 10 Sulfaquinoxaline

