

Stimulants by LCMS using Kinetex 2.6u Biphenyl 50x3.0mm

Column: Kinetex® 2.6 µm Biphenyl 100 Å, LC Column 50 x 3.0 mm, Ea

Dimensions: 50 x 3 mm ID

Order No: 00B-4622-Y0

Elution Type: Gradient

Eluent A: Water with 0.1% formic acid

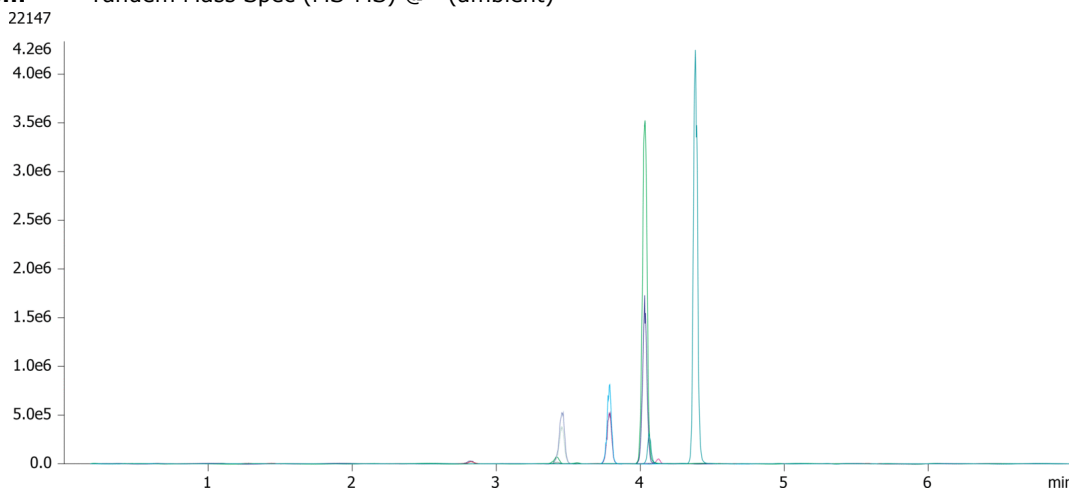
Eluent B: Methanol with 0.1% formic acid

Gradient Profile:	Step No.	Time (min)	Pct A	Pct B
	1	0	90	10
	2	0.5	90	10
	3	2	75	25
	4	4.5	20	80
	5	4.51	15	85
	6	5.5	15	85
	7	5.51	90	10
	8	7	90	10

Flow Rate: 0.6 mL/min

Col. Temp.: 40 °C

Detection: Tandem Mass Spec (MS-MS) @ (ambient)



Products used in this application:



ANALYTES:

1 Amphetamine

Retention Time: 2.71 min

2 Methamphetamine

Retention Time: 3.85 min

3 Phentermine

Retention Time: 3.47 min

4 Ritalinic acid

Retention Time: 4.05 min

5 Methylphenidate

Retention Time: 4.31 min

6 MDMA

Retention Time: 3.7 min

7 MDA

Retention Time: 3.36 min

8 MDEA

Retention Time: 3.95 min

©2024 Phenomenex, Inc. All rights reserved.

For more information contact your Phenomenex Representative at support@phenomenex.com



Phenomenex products are available worldwide.

www.phenomenex.com

support@phenomenex.com