

Antiepileptic Drugs by LCMS using Kinetex 2.6u Biphenyl 50x2.1mm

Column: Kinetex® 2.6 µm Biphenyl 100 Å, LC Column 50 x 2.1 mm, Ea

Dimensions: 50 x 2.1 mm ID

Order No: 00B-4622-AN

Elution Type: Gradient

Eluent A: Water with 0.1% formic acid

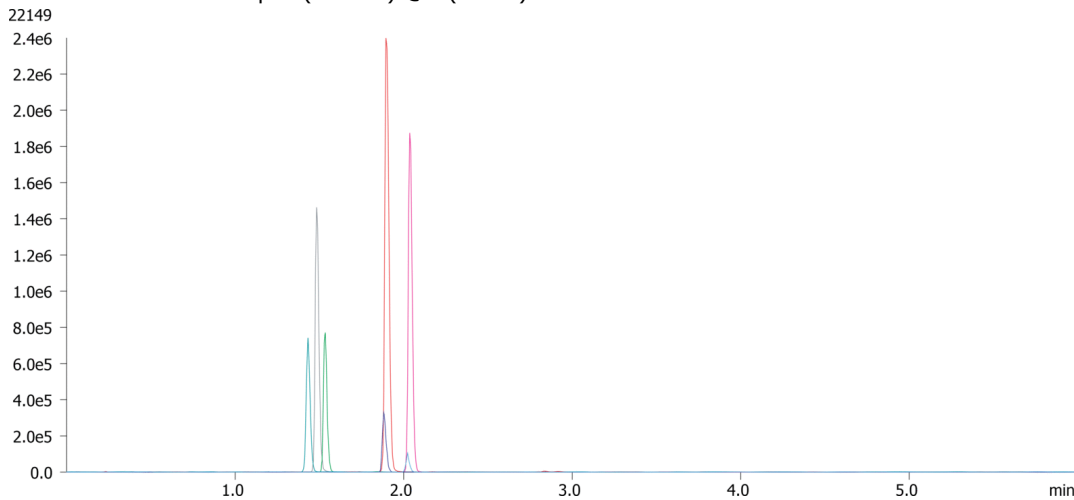
Eluent B: Acetonitrile with 0.1% formic acid

Gradient Profile:	Step No.	Time (min)	Pct A	Pct B
	1	0	98	2
	2	3	5	95
	3	3.1	98	2
	4	6	98	2

Flow Rate: 0.5 mL/min

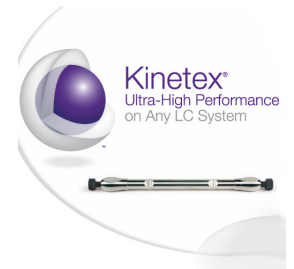
Col. Temp.: 40 °C

Detection: Tandem Mass Spec (MS-MS) @ (40 °C)



ANALYTES:

- 1** Pregabalin
Retention Time: 1.43 min
- 2** Levetiracetam
Retention Time: 1.48 min
- 3** Gabapentin
Retention Time: 1.53 min
- 4** Lamotrigine
Retention Time: 1.88 min
- 5** Lacosamide
Retention Time: 1.9 min
- 6** Zonisamide
Retention Time: 2.02 min
- 7** MHD
Retention Time: 2.04 min



Products used in this application:

